



D. W. ARTHUR ASSOCIATES ARCHITECTURE, INC.
EARLY EDUCATION PRACTICE OVERVIEW

OTTER CREEK CHILDREN’S CENTER
JANUARY 13, 2023

TABLE OF CONTENTS	Page
FIRM INTRODUCTION	
•Firm Profile and Design of Early Educational Environments	i-ii
•Lectures and Institutes	iii
•Recognition, Publications and Presentations	iv
PORTOLIO OF SELECTED PROJECTS	
•Concord Children’s Center	1
•Harvard University Children’s Centers - Overview	2
•Soldier’s Field Park Children’s Center at Harvard Business School	3
•114 Western Ave. Children’s Center	4-5
•Williams College Children’s Center	6-8
•MIT Children’s Center	9-10
•Partners Children’s Center	11-12
•Le Club Nounours/Teddy Bear Club Preschool	13
•Teton County Children’s Learning Centers - The Ranch	14-16
•Corning Children’s Center	17-19
•Brandeis University - Lemberg Children’s Center	20
•U. Mass. Medical Center Child Care Center	21
•Lincoln Nursery School	22-23
•Montessori Children’s School	24-25
•Ironbound Children’s Center	26-27
•Agassiz Preschool	28
•Groton School Children’s Center	29
•Boston Children’s Museum - Countdown to Kindergarten Exhibit	30

D5 FH5 @7 @9 BH' @GH.....
.
F9DF9 G9BH5 H-J9 'DFC>97 H' @GH
.
F9GI A9G'
.

FIRM INTRODUCTION

A. FIRM PROFILE

D. W. Arthur Associates Architecture, Inc. has extensive experience in the design of educational environments as well as a range of other building types, including workplaces and residences. This blend of design work has enabled its educational design practice to be enriched through cross-fertilization of ideas. Consistently engaging in the art and science of inventive problem-solving, the firm is committed to the design of built environments that create memories and transform the way people see the world. The office engages its clients in the creation of places which are both pragmatic and beautiful. Sponsors for our wide-ranging projects include institutions, corporations, community/volunteer groups, governments and not-for-profit organizations.

With a commitment to sustainable building practices, the firm’s architects believe that principles of energy efficiency, resource sensitivity, and incorporation of natural building materials are in close alignment with forward-thinking early education programs. A hallmark of our design thinking is the consideration given to the outdoor environment and the transition areas between the outdoors and activity areas. Design sensitivity to these spaces is felt to be critical to a holistic children’s realm. Through its practice and educational presentations, D. W. Arthur Associates has encouraged a re-thinking of the playground environment – moving away from formulaic playground structures to more open-ended designs that encourage child-directed engagement with the natural world and offer opportunities for creation, variety and discovery.

Complementing professional practice, the firm has been engaged in educational, research and volunteer efforts, and has presented and led workshops and design institutes focusing on early childhood environments.

B. DESIGN of EARLY EDUCATIONAL ENVIRONMENTS

Having dedicated the majority of our design energies to early educational environments for young children since 1989, we have developed an exceptional foundation in the entire breadth of issues related to the delivery of this unique building type, including programmatic, operational, regulatory and budgetary considerations. The firm’s early education portfolio includes designs for over 100 programs in new free-standing buildings and renovated existing structures, located in a variety of settings ranging from rural environments to institutional and mixed-use developments in dense urban environments. Completed projects range in size from intimate programs in small church basements to large “campuses” with capacities up to 600 children. Our designs have been realized in over a dozen states and in Japan.



- **Designing the Environment as a Curriculum Partner**

Through this varied experience, we have developed a team of professionals that is uniquely attuned to the design of high-quality educational environments. Creating an exciting and stimulating environment for young children requires knowledge of their developmental needs at each age and an appreciation of how they may engage with the spaces they inhabit. A sensorially rich and complex environment is supportive of the many ways in which children learn, and careful design orchestration helps to make the environment coherent and harmonious.

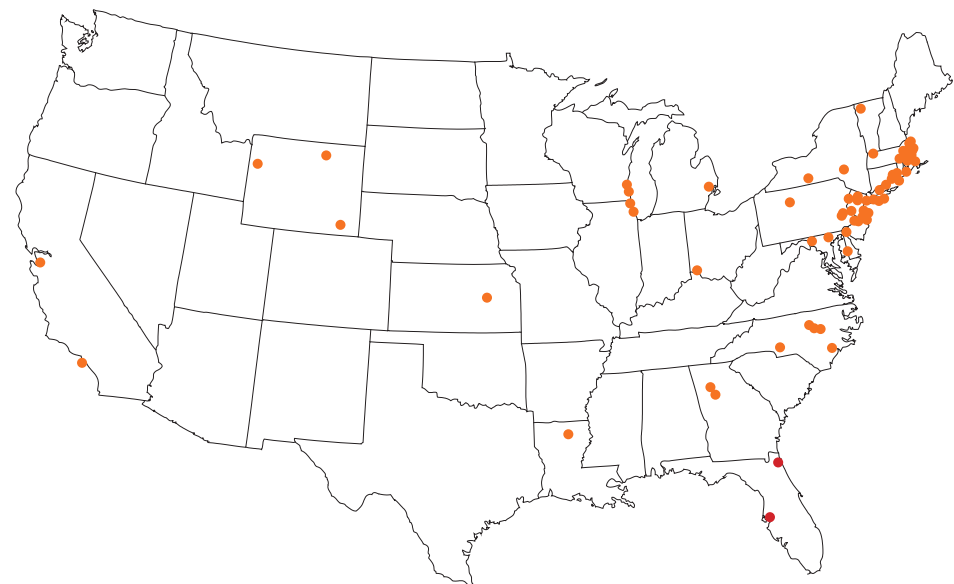
We have worked with many of the foremost educational and programmatic specialists in the field and are well versed in the leading educational pedagogies. We fully understand the importance of the environment and its role in supporting the curriculum. We work closely with each program to ensure that the specific physical characteristics of our designs not only support the principles of each program but also provide unique opportunities for exploration and discovery.

• **Leadership Through Complex Regulatory Processes**

Our firm knows how critical it is that ‘out-of-the box’ thinking about environments for children be grounded in a detailed understanding of the regulatory issues that apply to this building type. Great ideas can be compromised without deep knowledge of the regulations that apply and where these regulations might be in conflict with one another. The process for getting consensus and approval require a highly organized and synthetic programming/design process to achieve a successful result.

In most projects there will be numerous overlapping regulatory and quality standards that will need to be accommodated. Many of these tend to be geographically specific requirements, such as state child care licensing regulations building code, plumbing code, accessibility regulations, and board of health standards. Others may be universal standards applicable to a local project, such as Head Start Guidelines, QRIS standards, ECERS and ITERS guidelines, etc. Further, elective or aspirational design guidelines may apply, such as NAEYC accreditation standards, pedagogical models such as Reggio Emilia, or other emerging criteria.

We make it a priority in the early stages of our projects to conduct thorough regulatory research, summarize our findings in a regulatory review report that highlights areas of possible concern, and meet with the applicable officials early on to gain consensus so that the project approval process proceeds smoothly.



Representative geographic distribution of projects

• **Successful Collaboration with Committees and Owner Groups**

The majority of our early education projects have involved organizations with a committee-based approach to decision-making. This has been the case with the universities, colleges, secondary schools, medical institutions, corporations, not-for-profits, and other sponsor clients.

Working with committee clients, we have found that there are often a wide range of interests represented by the individual stakeholders involved. Our seasoned professionals are comfortable and committed to bringing groups to consensus. We often lead the team by identifying options and tradeoffs, reviewing advantages and drawbacks, and ultimately developing a design that satisfies the whole team.

• **Experience with Limited Budgets and Condensed Schedules**

Limited budgets and condensed schedules are typical for many construction projects and we have found them to be very common for early education facilities. We approach every project with the goal of providing the highest quality environment for young children and their community with cost-effective design and construction strategies. We know how to carefully balance the construction investment to maximize value for early education programs. Our strategies include ‘economy of means’ - designing spaces and details to anticipate the many alternative ways they may be used in an early education environment.

Condensed schedules are also common for construction projects, and have unique implications for early education. Often, new facilities target an opening date to coordinate with the school year. For projects that involve renovation or expansion to existing programs, minimizing down-time due to construction is critical to the families served as they balance the demands of work and family. In some cases, we have configured projects so that they can be constructed in phases with minimal disruption to the capacity and operation of the existing center. We have also utilized modular building strategies for child care use to assist with these delivery challenges. Close collaboration of the project team during the exploration of both traditional and innovative delivery methods is fundamental to identifying project-specific solutions.

C. LECTURES and INSTITUTES

With a commitment to expanding our knowledge base and to practice in the forefront of our discipline, we have collaborated with many of the leading educational, program and operational specialists in the field of early education and have had numerous opportunities to train, educate, and share our experience with others.

New Zealand Institute of Architects

Lecture and Workshops Director

Dogan Arthur spoke and conducted workshops in the Bay of Plenty Region in New Zealand, with a focus on specialized practice in educational design. Utilizing this program type as a common thread, the talks addressed the diversity of design strategies in response to locale, context, pedagogy, and other variables. Commonality of practice issues with New Zealand architects was also thematic.

“The Institute for Child Care Design”

Harvard University Graduate School of Design

Speaker and Design Critic

During this week-long professional development course (over a 10 year period), Dogan Arthur presented conceptual design and technical information to the institute participants who represent diverse disciplines and include architects, educators, real estate developers, institutional benefits providers and landscape architects. Presentations have addressed interior, exterior, and “in-between” spaces. Dogan has also been the visiting critic for the design reviews on the final day of the institute.

“Design for Children IN Nature”

National Conservation Training Center, Shepherdstown, West Virginia

Speaker and Participant

During this four-day design institute, Dogan Arthur presented design concepts and strategies intended to encourage children’s engagement in and with nature. In addition to examinations of ways to encourage outdoor exploration by way of continuity of indoor-outdoor spaces, overall planning strategies were discussed. The theoretical background was then illustrated via a series of case studies, drawn from the firm’s project portfolio.

The institute, organized by the Natural Learning Initiative, attracted a broad cross section of individuals committed to improving environments and programs for young children. A highlight of the institute included a “dragon search” adventure into the woods and down to the Potomac River.



**“Building Stronger Centers” Training Institute
Children’s Investment Fund (CIF), Boston**

Speaker and Design Critic

D. W. Arthur Associates Architects has participated in design clinics sponsored by this investment fund, which supports early education providers seeking assistance with improvement projects for physical environments.

**Presentation on Outdoor Environments for Young Children,
Playground Design Workshops
Local Initiative Support Corporation (LISC), Connecticut and Rhode Island.**

Speaker, Workshop Director and Design Critic

D. W. Arthur Associates Architects has provided hands-on design education for early education providers attending workshops sponsored by LISC, a community development corporation. The presentation at the workshops introduces providers to a range of design issues including codes and regulations, safety and technical issues, site and design considerations. The presentation is followed by a hands-on design exercise in which participants are assisted in developing a design for a selected site and program, followed with a “pin-up” final review.

D. RECOGNITION, PUBLICATIONS and PRESENTATIONS

Boston Society of Architects Design Awards
2017

The David M. Koch Childcare Center at MIT received a design award in the annual awards program for the small projects category.



2016
The Corning Childcare Center received a design award in the annual awards program for the education category.

2013
Teton County Children's Learning Center received a design award citation in the annual awards program for the education category.

American Institute of Architects New Jersey Design Awards

2015
The Ironbound Children's Center received an award in the annual design competition.



Modular Building Institute Design Awards
2013

The David M. Koch Childcare Center at MIT received a design honor award.



International Design Excellence Awards
2013

"The Ranch" (Teton County Children's Learning Center) received a design award.



"World Architecture Festival," Singapore Award Finalist, Schools Category
2012

The Teton County Children's Learning Center received



international recognition for design excellence by a juried panel of professionals when it was selected as a finalist among a world-wide field of submissions.

Design Guidelines for Early Education and Out of School Time Facilities - 2016 Children's Investment Fund

In conjunction with a capital funding program administered by CIF, we were invited to create a design guide to assist applicants and project teams with project development. Programs across Massachusetts are encouraged to apply for capital grants that target improvements to their physical environments. Our design guide focusses on aspects that are particularly unique to the age groups and program goals for these facilities.

Child Care Center Design Guide - 2006, updated 2014 Local Initiatives Support Corporation

Working closely with LISC, a New York based organization committed to the generation of high quality child care programs, we developed a fully detailed and illustrated guide to assist with the design of child care environments. The guide comprehensively addresses design issues and is intended to assist caregivers, educational professionals, designers and architects. Dogan Arthur was the lead author, and the firm produced all illustrations and most of the project photographs.

Family Child Care Designs; Child Care Center Design Ideas Guide - 2004 LISC Rhode Island

D. W. Arthur Associates Architects has developed a series of illustrations for utilization in a variety of training venues and media sponsored by LISC. The collection of images is intended to communicate design ideas that support high-quality environments for child care.

"CourtCare" - Court Child Care Conference for Massachusetts Trial Courts - 1999 Presenter

This conference was organized to promote the proliferation of child care solutions for those utilizing the Massachusetts Trial Courts. The presentation focused on the design by D. W. Arthur Associates for a drop-in center for children at the Edward W. Brooke Courthouse in Boston.

"Design of Environments for Early Childhood Learning" Seminar at convention of the National Association for the Education of Young Children (NAEYC), Washington, DC - 1995

Speaker
Dogan Arthur led this seminar on the design of environments for early childhood learning. The primary objective of the presentation was to enable child care providers and developers to improve communications with designers in order to realize their goals for the physical environment.

SELECTED PROJECTS

Concord Children’s Center Concord, MA

1

In Construction. Concord Children’s Center operates several programs serving the greater Concord community, and is consolidating and expanding some existing programs at a new site. DWAAA has designed renovations and additions to an existing residential property to accommodate about 120 children ranging from infants to school age. The property is situated overlooking historic preserved farmland near the Minuteman National Historical Park. Inspired by traditional connected farmhouse complexes typical of the agrarian heritage of Concord and greater New England, the new complex optimizes a restricted site with a two-story organization that enables more ground dedicated to surrounding playgrounds.



D. W. ARTHUR ASSOCIATES ARCHITECTURE, INC.

SELECTED PROJECTS



Area Map of Harvard University, Cambridge and Allston, Massachusetts

Oxford Street Daycare Cooperative

Harvard Yard Child Care Center

Harvard Yard

Peabody Terrace Children's Center

Soldier's Field Park Children's Center

Harvard Business School

School of Engineering & Applied Sciences Children's Center

School of Engineering & Applied Sciences Campus

Harvard University - Children's Centers Overview

We have been working with Harvard University since 2006 to expand, renovate and create new early education programs across campus. Until recently, these centers have been autonomous not-for-profits, each with a distinct character and pedagogical foundation. The university has encouraged this diversity of options to serve its broad community of faculty, staff and students. The centers are also open to the general public, and draw families from Cambridge and surrounding communities.

D.W. Arthur Associates recently designed Harvard University's first new center in over 50 years. This was built in Allston at the core of the School of Engineering and Applied Sciences Campus. Our experience working with Harvard has given us a good understanding of how the children's centers are integrated into a large, complex and urban institution. The centers are situated in diverse locations around campus. Since the centers are integrated completely within the campus (and not located in peripheral areas), there are unlimited opportunities for educational and developmental program enhancements beyond the typical activities of a standard child care center.



Peabody Terrace studio inspired by Reggio-Emilia Programs

Soldiers Field Park Children’s Center at Harvard Business School Allston, MA

As part of a comprehensive reconstruction of 1970’s era dormitories in the heart of the Harvard Business School campus, DWAAA redesigned the original Soldiers Field Park Childrens Center (SFPCC) for a new location and to reflect current best practices for child care and early education. The center occupies two floors of one of the residential buildings, with age-appropriate playgrounds wrapping the facility at grade. A central communicating stair serves to unify the program and reinforce a sense of community. It incorporates stepped platform seating opening to a multipurpose room, children’s library with reading nooks, “overlooks” and other welcoming elements.

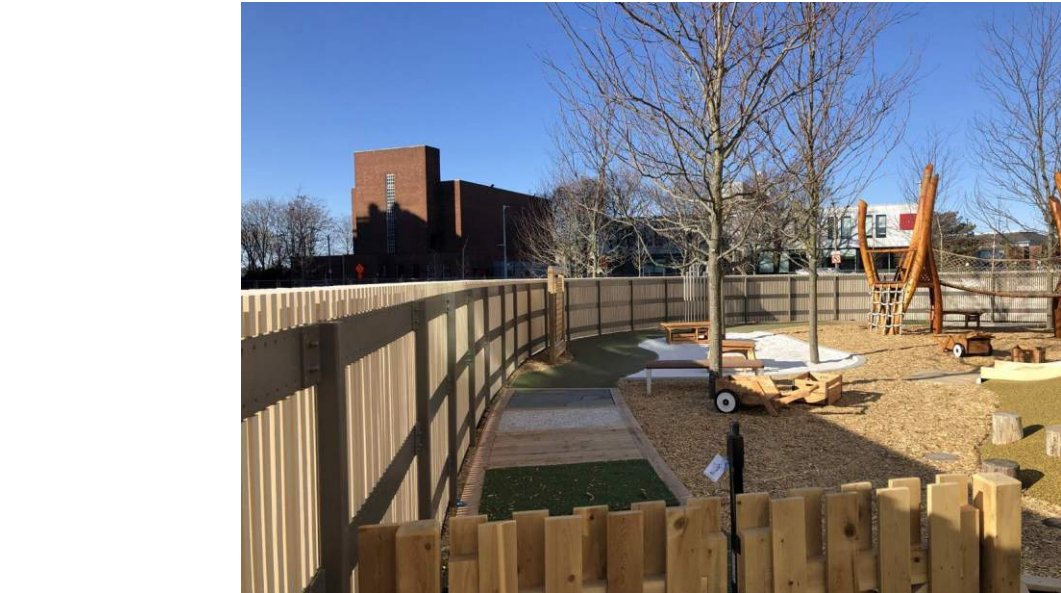
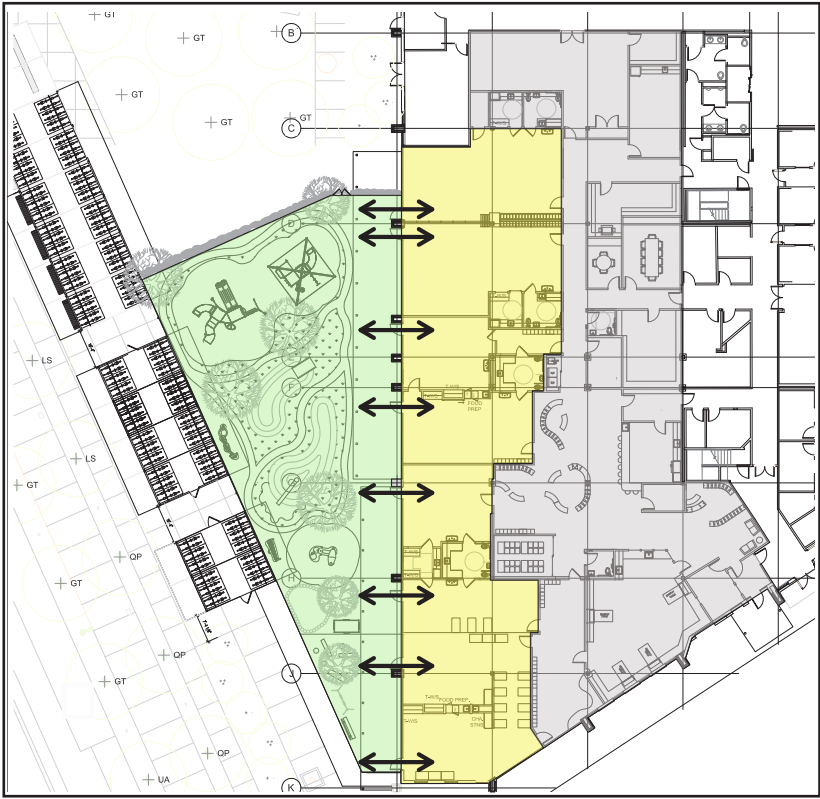




More about this center and Soldier’s Field Park Children’s Center here: <https://www.sfpchildrenscenter.org/>

OUTDOOR PLAY

The center’s playgrounds are organized to allow direct access from every classroom. The playground activities are graded by age to correspond with age groups of the adjacent classrooms, Infant through Toddler. A deep porch with a covering of translucent material serves as an indoor-outdoor transisiton area running the entire length of the child care center. Consistent with an interest in natural learning, the materials and features of the playground include toppographic variation and a wealth of tactile experiences. Natural materials include black locust pavers for the entire porch and a custom designed sculptural climbing structure. The sculpturally undulating fence enclosure is comprised of stained wood slats.





View of gathering areas in hallway

The building is organized as a linear sequence of classrooms all opening to the South onto the expansive outdoor play areas. A simple monopitch roof slopes up to allow for high clerestory windows which admit daylight along the wood ceiling. This strategy enables a deep porch along the entire south side without compromising the daylighting of the rooms. The interior of the circulation accessing the classrooms is configured to provide alcoves and eddies near classroom entrances. These assist with the daily transitions for children and families coming from home. A series of light scoops along this play gallery are designed with pigmented plywood to animate the interior spaces.



View of preschool classroom



View of school age classroom



View of alcove outside of infant classrooms



This new center was designed after a comprehensive site selection process D.W. Arthur Associates conducted with the college. The site was selected because of its combined qualities of being ideal for the development of a natural play environment and its proximity to campus. The building was sited at the northern edge of the site to maximize the outdoor play area and the playground was carefully designed to preserve and take advantage of the existing mature trees. The building has a 120 foot long porch to provide an ample amount of ‘outdoor classroom’ area for messy play and natural science curriculum. The porch is covered with a translucent roof material to allow diffuse light into the porch and adjacent classrooms. The design process for this project included significant input from the various stakeholders (parents, staff, college administration and neighbors) via meetings with each group to ensure that the building and site design addressed their aspirations and concerns.



View of building entry



View of playground and covered porch



View towards playground and classroom facade



Transition from classrooms to playground (“Outdoor Classroom”)



Deep porch for protected outdoor play activities



Custom climbing structure



Semi-covered School-Age sandbox



Garden area



Infant/Toddler/Pre-school sandbox

David H. Koch Child Care Center at MIT



View of building and preschool playground

[Link to time-lapse video of modular construction](#)
[Link to video of concept design for modules](#)



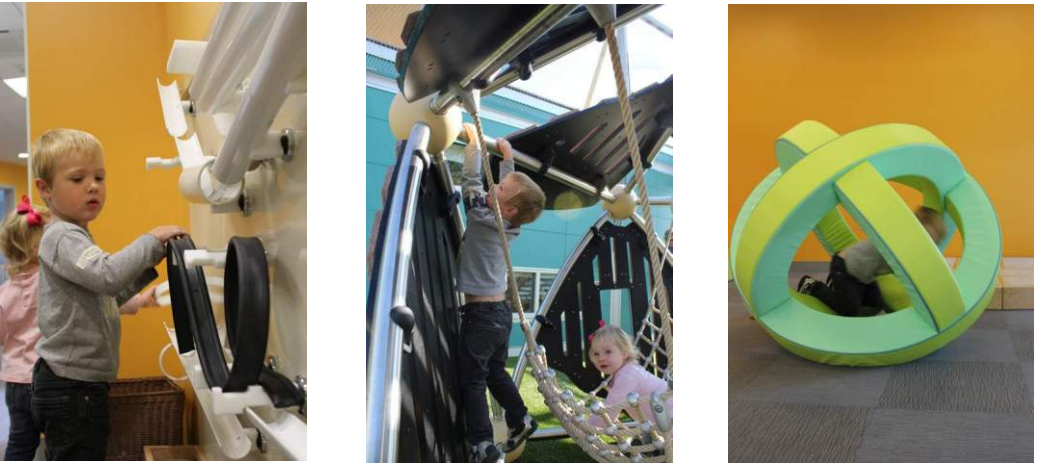
View of building entry



South Elevation



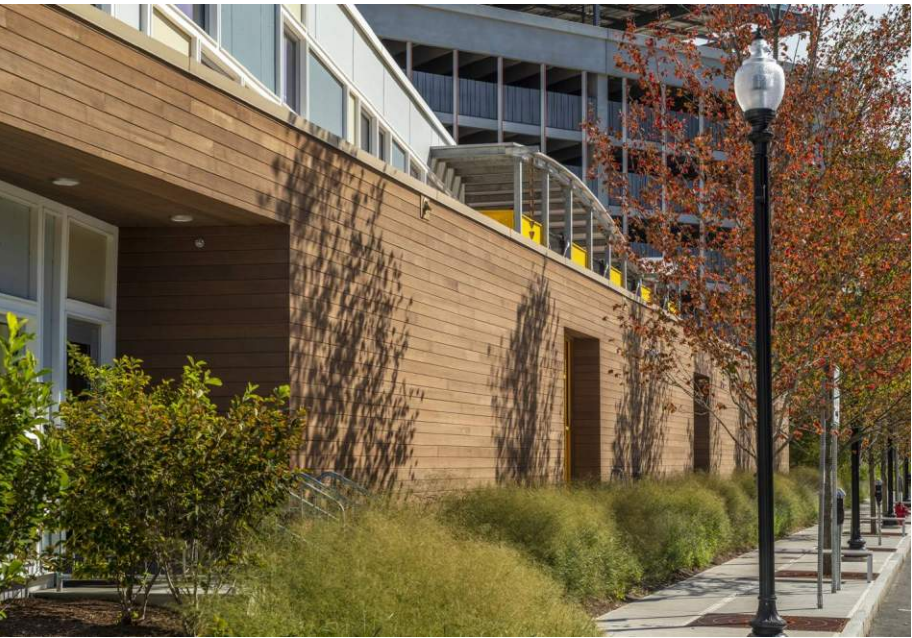
Fundamental to the design of this early education center is the concept “the environment is the curriculum”. Young children learn through engagement with and exploration of their environment, and our design is intended to support that engagement. The celebrated modularity of the building construction is continued from the exterior to the interior through exposed and uniquely colored structural elements, particularly in the exposed ceilings. Within this enclosure is inserted partitions and more subdued finishes to create distinct activity spaces and to support the display of children’s creative production.





Partners Children's Center at Assembly Row - Somerville, MA

Partners Healthcare, New England's largest healthcare network, invited DWAAA to design a new children's center for their recently constructed headquarters campus. The restricted site dictated a two-story solution, which was configured to provide outdoor play in a rooftop "field house" along with a grand activity stair down to the playgrounds. Destination activity alcoves animate the street side of the building, and include a physics/ball play area, a dramatic play theater, and a double height light and color play environment.







ADAPTIVE RE-USE

Located on a bucolic wooded site in a residential neighborhood, this bilingual preschool was created in an existing single family residence. Selective renovations and additions enabled the creation of light, airy and spacious classrooms while maintaining the residential character of the neighborhood. The site was carefully designed to provide a one-way vehicular loop on the property for drop-off and pick-up, minimizing the impact to local traffic. The building configuration also created some enclosed outdoor spaces to support outdoor activities throughout the year.



Teton County Children’s Learning Centers - “The Ranch”

D. W. Arthur Associates, working in collaboration with local firm (Ward + Blake), developed a comprehensive master plan for Teton County in Wyoming for the consolidation and expansion of the county’s early education programs. This center is the first of several new centers that will be created as part of the master plan. Located on a site with significant development constraints, a design was developed for a center with a partial second story. The playgrounds are designed to extend the children’s realm into the exceptional natural environment within which the project is sited. The project achieved LEED Gold certification and was selected as an award finalist in the “schools” category at the World Architecture Festival held in Singapore in 2012. It was also recognized with a design award from the Boston Society of Architects in 2013.





Teton County Children’s Learning Centers - “The Ranch”

D. W. Arthur Associates, working with Teton County, Wyoming developed a comprehensive master plan for the reconfiguration and expansion of their early education programs county-wide. As a part of these efforts, three new centers that will enable the county to integrate their special needs programs have been designed. This first project is located on a site with significant development constraints, which led to a design for a center with a partial second storey. The outdoor play-spaces are located on both the ground level and the roof top so that all the classrooms have proximate access to outdoor play. The playgrounds are designed to extend the children’s realm into the exceptional natural environment within which the project is sited.



This new child development facility is designed as a series of “family houses” organized around two central courtyards. As each “house” contains one of each age group from infants through school-age, this design exemplifies the current goal for the “continuity of care” model. The family house design was particularly well suited for this center because it allows for incremental expansion based on child care demand in the town. The center features destination places such as an art studio, library and specialized play-yards which provide opportunities for “field trips” without leaving the center.



Entrance court



“Light Lab” with varied glazing types and internal loft



View from beneath canopy



Library



Reception area. View towards courtyard

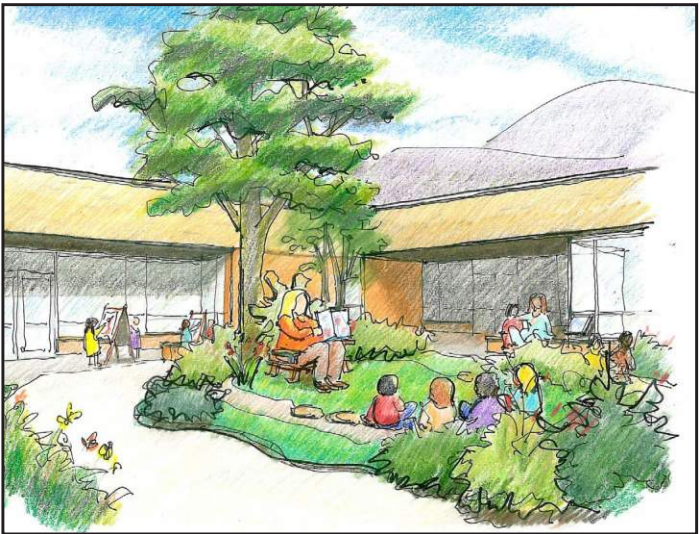


"Barn Door" at director's office in reception area

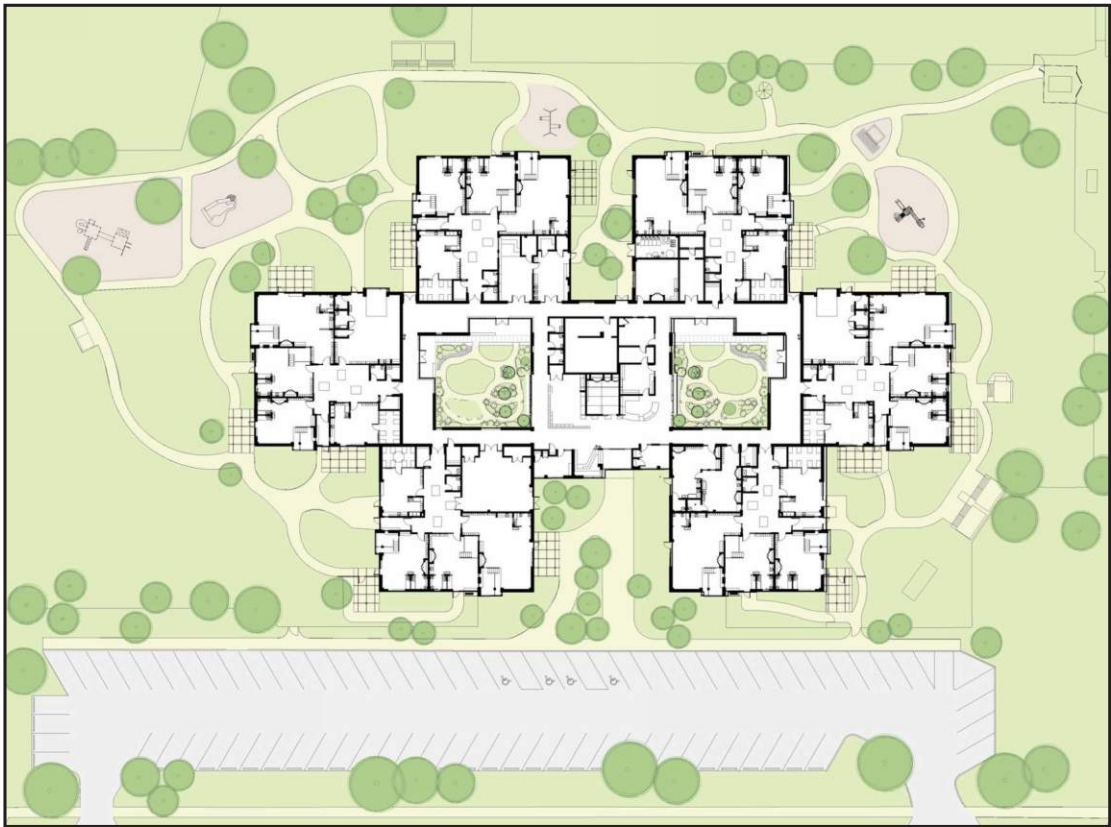


View of courtyard - note indoor and covered outdoor activity spaces on left create indoor-outdoor continuum

Natural outdoor play is an important curriculum component for this center. The building was therefore designed to maximize the connection between the classrooms and outdoor play areas. All of the classrooms have direct access to the playgrounds. There are a range of outdoor spaces with a variety of enclosures to ensure that the children can enjoy the natural world through all seasons and types of weather. In support of this concept, the building is organized around two landscaped courtyards with adjacent covered patios. The courtyards allow for play during windy winter days; the covered areas allow for outdoor play and art projects during rainy weather.



Sketch of mature courtyard plantings



Plan of completed complex (all phases) and extensive and varied playgrounds



View of toddlers at play beneath canopy

Brandeis University - Lemberg Children’s Center

The child care program run by Brandeis University serves the children of the university’s extended community, offers work-study positions for up to 100 university students per week, and provides an academic component for the psychology department. Having outgrown its decades-old home, the program has been relocated to a new dedicated building. The design exploits dramatic grade change and limited buildable area of the site to its advantage, offering a compact building of two connecting levels, each of which enjoys direct access to grade level playgrounds. The design was developed without the use of corridors so that the the area devoted to classrooms, common spaces and staff programming is maximized within a very economical footprint. Seventy three children are served in this 7.000 s.f. building.



Porch and playgrounds at upper level



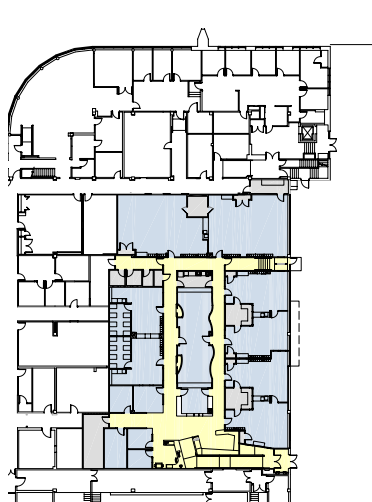
Preschool classroom



Preschool classroom loft



Approach to lower level from Old South Street

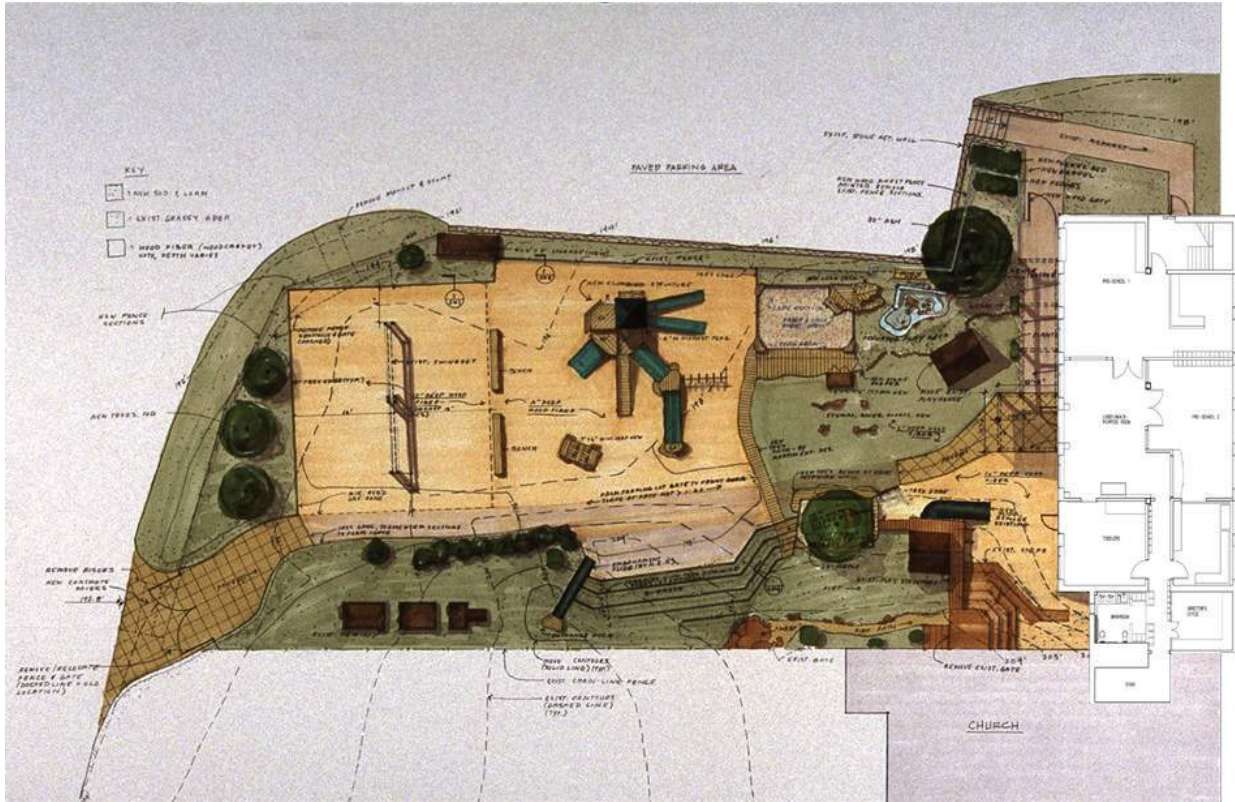


UMASS MEMORIAL MEDICAL CENTER CHILD CARE CENTER
Worcester, Massachusetts
11,000 SF
2015

University of Massachusetts Memorial Medical Center Child Care Center

Serving the expansive medical complex of UMass Medical School and UMass Memorial Hospital, the new 11,000 SF early education and child care center accommodates 90 children, aged infant through preschool. The facility is located in a renovated structure that originally housed medical school labs and classrooms. The existing building was less than ideal for early education because it had minimal windows and its footprint was below grade. D. W. Arthur Associates maximized the perimeter glazing and creatively designed the classroom layout to utilize borrowed daylight. The design features a large “commons” in the center with ample daylight both from adjacent classrooms and large “light-scoops” carved out of the waffle-slab roof.





Site Plan



Water play area with pump and sluiceways



Covered entry porch and integrated pergola



Climbing wall



Pergola with bench at entrance



Eagle's nest structure at high point



Aphitheater in use for May Day celebration



Embankment slide (foreground) and amphitheater take advantage of grade change on site



Covered porch entrance



Sand play and ntegration of benches, amphitheater steps, steps to play structure



Climbing structure



Sand play, climbing structure



Learning garden



Raised beds



Arbor

D. W. Arthur Associates worked closely with the Natural Learning Initiative (NLI) to develop a master plan for the outdoor spaces at MCS along with two significant expansions to their school. The overall plan encourages extensive overlaps and continuities between indoor and outdoor spaces. The first addition is a free-standing outdoor classroom, or pavilion, linked to the original elementary school by a new covered loggia and porch. The pavilion is highly transformable, able to open and close in response to varying activities and weather conditions. The second project is the new upper elementary building, which includes a four-season classroom, similar to the pavilion, but with direct connections from the interior classrooms. D. W. Arthur Associates collaborated closely with the school and NLI to plan the site and these structures to maximize opportunities for play in the natural environment, both preexisting and newly developed.



Loggia to pavilion



Pavilion



Open lawn



Loose parts



Big woods



Trails in woods

The pavilion was developed to encourage a sense of connection to the natural world. The doors and windows open in ways that transform the classroom into an open shelter. The butterfly roof captures rainwater which is stored in a cistern, treated and used for water play, irrigation in learning gardens, and for science experiments. The low, wide worksurface that straddles the threshold between ‘in’ and ‘out’ serves numerous activities. This surface serves, among other things, as a “laboratory bench” for inspection of specimens from the local woods, a display counter for the children’s farmer’s market, and a performance stage for dramatic productions.



Pavilion nestled in natural play environment



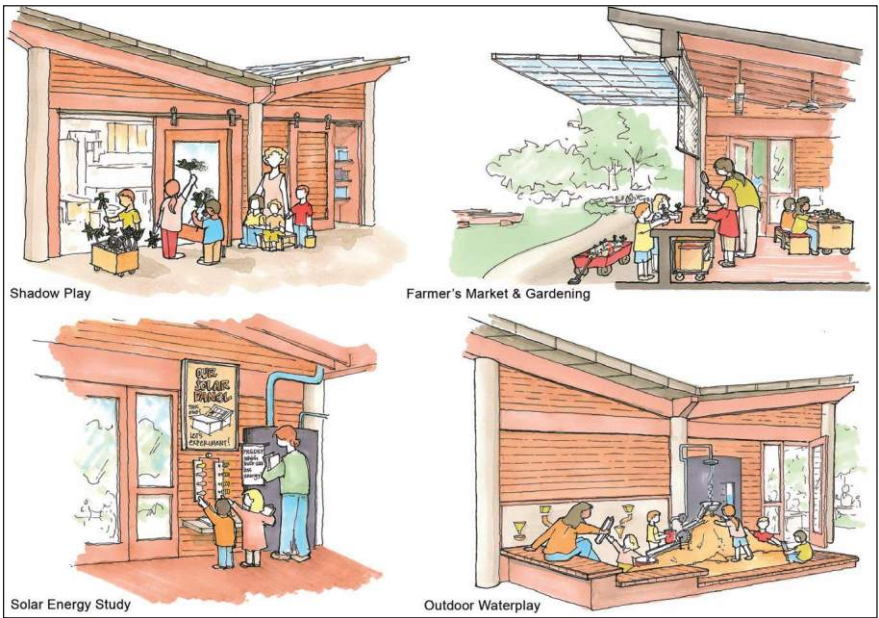
Interior of pavilion shows use of natural ventilation



Pavilion open with child-height counters at sill of window opening



Pavilion section with open stage at left and loggia at right



Design sketches



Plan



View of courtyard from second floor



Model

D.W. Arthur Associates designed a multi-level addition to an existing preschool in the Ironbound neighborhood of Newark, NJ for a vibrant community development corporation. The addition includes an expansive multipurpose space that provides a continuity of environments - from interior to covered exterior, to a roof garden which supports a range of activities and affords children opportunities to connect with elements of the natural world. Additional playgrounds in a courtyard and at the north edge of the building allow further outdoor play options for children at close proximity to their classrooms.

A staff-led tour of the center we designed, with Spanish and Portuguese subtitles can be found here: <https://youtu.be/yeiCf-ct0aw>



Rooftop play yard with cistern foreground, left



Rooftop play yard



Multipurpose space for gross motor play (top) and set up for community meeting (bottom)



Classroom



The central courtyard has been termed an “urban oasis” and is flanked by a new multi-purpose room on the second floor. The form of this volume was inspired by the reuse of wood bowstring trusses comprising the roof of the preexisting auto body shop that was demolished to construct this project. The glass-wrapped space opens up to porches along the courtyard, and to the rooftop playground at the second level. This “green roof” includes gardens and planter boxes irrigated by harvested rainwater captured in a cistern at the end of a “flying gutter” springing from the vaulted roof.





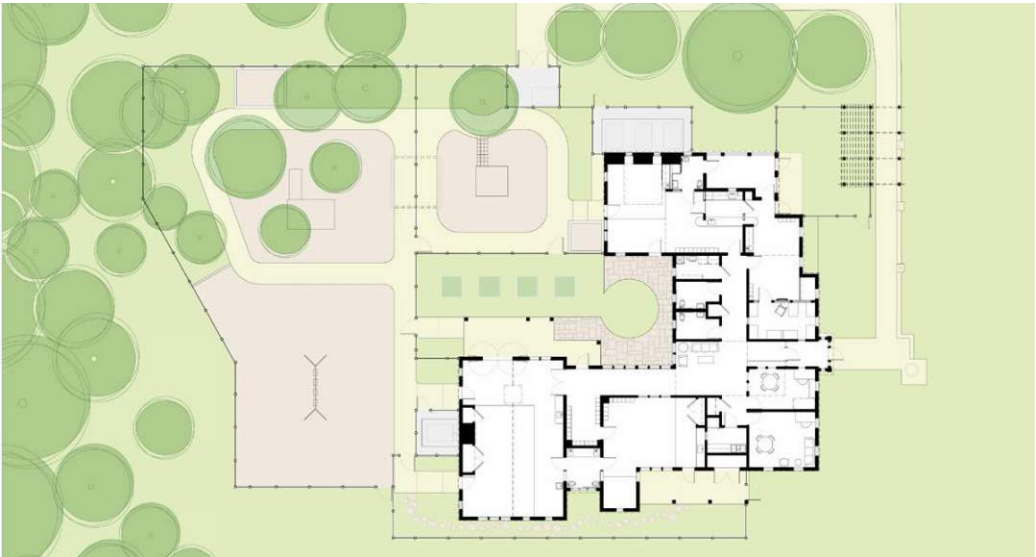
Agassiz Preschool is a long standing parent-staff cooperative. The school needed to move from their original location in a church basement because the property was being redeveloped. Significant renovations and additions were required to address deferred maintenance issues and to transform a residential property into an inviting preschool environment. The design addressed building code and accessibility requirements within the framework of the local historic district requirements. An addition houses the new elevator and egress stair and the entry ramp is incorporated into a new entry porch. The interior was transformed from a series of small rooms and passageways to large, light-filled rooms that are scaled to the needs of the preschool classrooms. We preserved and incorporated the detail and charm of the existing building such as window seats in bay windows and fire place mantels. The existing sun room was converted into a year-round space that is integral to the young preschool classroom and incorporates a low bench/stage for dramatic play. The design and execution was calibrated to work with Agassiz’ limited budget and integrated the significant involvement of parent volunteers for the construction.



Groton School Child Development Center



Designed to blend with the historical school campus and town of Groton, MA the composition of this newly constructed center resembles a traditional New England connected farmhouse. A central volume houses the entrance, administration and infant rooms, while connected “L” s and a timber framed barn house the toddler and pre-school rooms. The center serves families associated with both the Groton School and the town of Groton.





General Overview



Creative Arts Area



Bus Simulation Video



Exploration & Engagement



Exhibit Entrance



Adult-Child Collaboration & Interaction

Boston Children’s Museum - “Countdown to Kindergarten” Exhibit

D.W. Arthur Associates designed a new exhibit space for the recently renovated Boston Children’s Museum. The intent of the exhibit is to augment city-wide programs that encourage readiness for the significant transition to elementary school from preschool. The exhibit is a model environment that represents best practices for early education, while also highlighting the universality of the kindergarten experience.

Acelero Learning Head Start, NY, NJ, WI, CT
Action for Boston Community Development, Dorchester, MA
Amherst College, Amherst, MA
Asian American Civic Association, Boston, MA
Abbott Laboratories, North Chicago, IL
Beacon Hill Nursery School, Boston, MA
Boston Children’s Museum, Boston, MA
Brandeis University, Waltham, MA
Bright Horizons Family Solutions, Watertown, MA
Childcare International, Tokyo, Japan
Children’s Investment Fund/CEDAC, Boston, MA
Citigroup, Jacksonville, FL
Computer Associates, Westwood, MA
Concord Children’s Center, Concord, MA
Corning Inc. & Corning Enterprises, Corning, New York
Du Pont, Wilmington, DE
First USA, Wilmington, DE
GSA (US General Services Administration)
Glaxo, Cary, NC
Groton School, Groton, MA
Harvard University, Cambridge, MA
Horizons for Homeless Children, Roxbury, MA
Hughes Aircraft, El Segundo, CA

Jewish Community Centers, Greater Boston, MA
Johns Hopkins University, Baltimore, MD
Massachusetts General Hospital, Boston, MA
Massachusetts Institute of Technology, Cambridge, MA
Mattel, El Segundo, CA
Merck & Co., West Point, PA
Middlebury College, Middlebury, VT
New England Deaconess Hospital, Boston, MA
The New York Hospital, New York, NY
Northeastern University, Boston, MA
Partners Healthcare, Somerville, MA
Pfizer, Groton, CT
The Prudential, Boston, MA
The Rivers School, Weston, MA
Rockefeller Group, New York, NY
SAS Institute, Cary, NC
Star Market, Allston, MA
SUNY/SUCF (State University of New York), Delhi, Farmingdale
Teton County Children’s Learning Centers, Jackson, WY
Turner Broadcasting Company, Atlanta, GA
United South End Settlements (with Utile), Boston, MA
Warner-Lambert, Morris Plains, NJ
Williams College, Williamstown, MA

D. W. ARTHUR ASSOCIATES ARCHITECTURE

Representative Child Care and Early Education Project List

Children's Services of Roxbury (CSR) classrooms addition

Boston, Massachusetts

CSR is comprehensively upgrading and expanding their headquarters in Roxbury. This project, funded through the CIF, includes construction to create new Preschool and Toddler classrooms to address demographic demands. The Children's Investment Fund (CIF), an organization dedicated to improving child care in Massachusetts, has retained DWAAA to review applications for Early Education and Out of School Time (EEOST) grant funding as well as to review awarded projects throughout construction.

Construction Cost: \$1,008,000

Completion Date: 9/1/2023

Paige Academy - Air quality and envelope integrity

Roxbury, Massachusetts

Paige Academy plans to upgrade their indoor environment to improve quality for the children they serve. Renovations include air quality via new HVAC and HEPA filtration. Also a number of building envelope components require repair to address water infiltration integrity.

The project will be funded through The Children's Investment Fund (CIF), an organization dedicated to improving child care in Massachusetts. CIF has retained DWAAA to review applications for Early Education and Out of School Time (EEOST) grant funding as well as to review awarded projects throughout construction.

Construction Cost: \$499K

Completion Date: 7/1/2023

Merrimack Valley YMCA - Playgrounds, room upgrades

Lawrence, Massachusetts

Merrimack Valley YMCA plans to upgrade their indoor and outdoor environments to improve quality for the children they serve. Renovations include room enclosures for acoustical management, updated playground components, etc.

The project will be funded through The Children's Investment Fund (CIF), an organization dedicated to improving child care in Massachusetts. CIF has retained DWAAA to review applications for Early Education and Out of School Time (EEOST) grant funding as well as to review awarded projects throughout construction.

Construction Cost: \$210K

Completion Date: 11/1/2023

Triumph, Inc. renovations to Quinn Building

Taunton, Massachusetts

Triumph Inc is comprehensively upgrading their buildings which serve 268 children in SE Massachusetts. This project, funded through the CIF, includes renovations to family and staff areas to create a more welcoming, safe and functional program. The Children's Investment Fund (CIF), an organization dedicated to improving child care in Massachusetts, has retained DWAAA to review applications for Early Education and Out of School Time (EEOST) grant funding as well as to review awarded projects throughout construction.

Construction Cost: \$490,000

Completion Date: 10/15/2023

Girl's Club of Greenfield - Playgrounds, HVAC upgrades

Greenfield, Massachusetts

Girl's Club of Greenfield plans to upgrade their indoor and outdoor environments to improve quality for the children they serve.

The project will be funded through The Children's Investment Fund (CIF), an organization dedicated to improving child care in Massachusetts. CIF has retained DWAAA to review applications for Early Education and Out of School Time (EEOST) grant funding as well as to review awarded projects throughout construction.

Construction Cost: \$315K

Completion Date: 10/1/2023

For Kids Only Afterschool Playgrounds

Winthrop, Massachusetts

For Kids Only (FKO) operates extensive children's (including after school) programs on Boston's North Shore for many years. This project will implement expanded playgrounds at a recently renovated building with increased capacity. Children's Investment Fund (CIF), an organization dedicated to improving child care in Massachusetts, retained DWAAA to review applications for Early Education and Out of School Time (EEOST) grant funding as well as to review awarded projects throughout construction.

Construction Cost: \$250,000

Completion Date: 10/1/2023

D. W. ARTHUR ASSOCIATES ARCHITECTURE

Representative Child Care and Early Education Project List

Action for Boston Community Development (ABCD) - Accessibility

Dorchester, Massachusetts

Action for Boston Community Development (ABCD) has been operating extensive children's programs in Boston for many years. This project targets renovations and improvements to an existing center to improve accessibility, update a cooking kitchen both for meals and nutrition programs, and creation of group spaces. Children's Investment Fund (CIF), an organization dedicated to improving child care in Massachusetts, retained DWAAA to review applications for Early Education and Out of School Time (EEOST) grant funding as well as to review awarded projects throughout construction.

Construction Cost: \$324,000

Completion Date: 9/15/2023

Vietnamese American Initiative for Development (VietAid) - Playground

Boston, Massachusetts

Funded through CIF, VietAid's project expands and improves an existing outdoor space wrapping their building to optimize outdoor play environments for young children. The playground has been carefully designed to maximize play opportunities on a very constricted site. Children's Investment Fund (CIF), an organization dedicated to improving child care in Massachusetts, retained DWAAA to review applications for Early Education and Out of School Time (EEOST) grant funding as well as to review awarded projects throughout construction.

Construction Cost: \$250,000

Completion Date: 7/15/2023

Ellis Memorial Children's Park - Playgrounds renewal

Boston, Massachusetts

Ellis Early Learning, previously Ellis Memorial has been operating extensive children's programs in Boston's South End for many years. This project, funded through CIF, will renovate and update the playground known as "Ellis Children's Park", a critical part of their activity environments. Children's Investment Fund (CIF), an affiliate of CEDAC, is an organization dedicated to improving child care in Massachusetts, and awards grants through a state-funded Early Education and Out of School Time (EEOST) program.

Construction Cost: \$250,000

Completion Date: 7/1/2023

John F Kennedy Family Service Children's Center renovations - Infants

Boston, MA

As evolving demographics lead to increased demand for infant and toddler care, JFK is planning renovations to transform their existing facility to create more capacity for youngest children. The building is a c. 1900 school structure, and has numerous levels posing significant accessibility challenges. DWAAA is designing a new accessible route to the new infant spaces, as well as renovated playgrounds. The new ramp and access will be closely coordinated with a major reconstruction of a surrounding housing development undertaken by the Boston Housing Authority.

Construction Cost: TBD

Completion Date: 9/1/2024

Children's Center at 99 Water Street

Watertown, MA

This new children's center is being designed as an integral part of multi-phase development on the banks of the Charles River in Watertown, MA. The complex includes biotech labs, office space and a variety of community amenities in two new buildings. The children's center, targeting a capacity of 50 children, will serve both tenants and surrounding community. The facility is being carefully integrated with the development to provide dedicated adjacent playgrounds, safe access, etc. DWAAA is providing design services in close coordination with the base-building design development.

Construction Cost: TBD

Completion Date: 10/1/2024

Nurtury - Horadan Way HVAC & Windows replacements

Boston, Massachusetts

Nurtury - Horadan Way operates several children's programs in Boston. Funded through CIF, this project will improve air quality and energy conservation in an existing building with a new HVAC system and new windows. Air quality has been a significant concern for programs operating during the Covid 19 pandemic. Children's Investment Fund (CIF), an organization dedicated to improving child care in Massachusetts, retained DWAAA to review applications for Early Education and Out of School Time (EEOST) grant funding as well as to review awarded projects throughout construction.

Construction Cost: \$250,000

Completion Date: 2/15/2022

D. W. ARTHUR ASSOCIATES ARCHITECTURE

Representative Child Care and Early Education Project List

Kwong Kow Chinese School

Boston, MA

Kwong Kow Chinese School invited us to assist in renovations to their school spaces in Boston's Chinatown. The building serves preschool (Buds and Blossoms, which we designed years ago) through teenage years.

Construction Cost: \$150,000 est.

Completion Date: 4/1/2022

Torit Montessori School

Boston, MA

Torit Montessori School invited DWAAA to assist in reconfigurations associated with their changing demographic demands. The community Torit's serves has increasing demand for infant and toddler care. We assisted them with conversion of spaces to accommodate younger children. This included conducting analyses of existing spaces with respect to various regulations and codes, and assisting with the explanation of how the existing building complies and can be occupied in a manner that is safe and appropriate for the inclusion of younger children.

Construction Cost: TBD

Completion Date: 12/1/2022

Ethos Child Care Center, South End

Boston, Massachusetts

Ethos is a growing startup company committed to creating very high quality early education and child care programs for millennials and other young families. Ethos previously invited DWAAA to design their first center to pilot their operations in South Boston. This second location is intended to serve the growing population of young families in Boston's South End.

Construction Cost: TBD

Completion Date: pending approvals

Harvard University - Peabody Terrace Children's Center renovations

Cambridge, Massachusetts

As part of their ongoing phased renovations, Harvard University is renovating the Peabody Terrace Children's Center. We are working closely with Baker Design Group, and the renovations are intended to augment the complete renovation and expansion in the south wing we designed for younger children in 2007. This complex, originally designed by Jose Luis Sert, contains graduate student housing and amenities. The 8,000 square foot center accommodates about 80 children, and occupies three distinct sections of the complex, organized around a large public courtyard with a children's playground.

Construction Cost: TBD

Completion Date: 6/1/2023

Jackson Place Head Start Children's Center

Cambridge, Massachusetts

An anchor of a major housing development, an existing Head Start program will be reconstructed in essentially its historic street-front location. The overall project includes about 290 new affordable housing units in a new development comprised of 8 four-story buildings. The Head Start will be integrated and front onto Rindge Avenue as a publicly facing cornerstone of the project. We have been invited to assist with the design of the child care center, working closely with the development's architect, along with CHA (Cambridge Housing Authority, and CAAS (Community Action Agency of Somerville) who operate the Head Start. In addition to carefully considered visibility and day lighting for the classrooms in their prominent location, a more private playground will be created in a courtyard accessed directly from the child care center. A temporary center will be built to enable on-going operations as final center is built.

Construction Cost: TBD

Completion Date: 1/1/2025

University of Massachusetts Memorial Hospital and UMass Medical

Worcester, Massachusetts

Serving the growing medical complex of University of Massachusetts Medical School and UMass Memorial Hospital, this project expands the existing center to a capacity of 142, aged infant through preschool. Our design strategy for the original child care will continue with careful adaptive reuse of the medical school's original anatomy laboratories. Ample day lighting from direct and borrowed views through classrooms along with large skylight scoops carved out of the waffle-slab roof transform the opaque industrial enclosure into a delightful and varied environment for children.

Construction Cost: TBD

Completion Date: project suspended

D. W. ARTHUR ASSOCIATES ARCHITECTURE

Representative Child Care and Early Education Project List

Concord Children's Center Renovations - West Concord location

West Concord, Massachusetts

Concord Children's Center intends to renovate their existing purpose-built facility in West Concord to accommodate shifting demographics. We are exploring opportunities to reconfigure internal spaces to convert some preschool rooms into infant/toddler rooms, while minimizing impact to on-going programs.

Construction Cost: TBD

Completion Date: pending funding

Concord Children's Center - Old Bedford Road

Concord, Massachusetts

Concord Children's Center operates several programs in Concord, and is planning to consolidate a few programs at a new site. DWAAA has been invited to design renovations and additions to an existing residential property to accommodate about 120 children ranging from infants to school age. The property is situated overlooking historic farmland near the Minuteman National Historical Park. The proposed design is inspired by traditional connected farmhouse complexes typical of the agrarian heritage of Concord and greater New England.

Construction Cost: \$5.8 M

Completion Date: 10/1/2023

South Middlesex Opportunity Council

Framingham, Massachusetts

South Middlesex Opportunity Council (SMOC) operates a range of programs in its building complex in Framingham, including child care. SMOC is targeting this renovation project to include upgrades to infrastructure to bring the environment into closer compliance with current best practices. A new HVAC system is currently being redesigned for the structures originally designed for athletics to improve filtration and air quality in conjunction with a new focus on the corona virus pandemic.

Children's Investment Fund (CIF), an organization dedicated to improving child care in Massachusetts, retained DWAAA to review applications for Early Education and Out of School Time (EEOST) grant funding as well as to review awarded projects throughout construction. Our reviews focus on quality levels (QRIS) and environmental considerations.

Construction Cost: \$1,000,000

Completion Date: 9/1/2021

East Boston Social Center

East Boston, Massachusetts

East Boston Social Center created a new children's center in the historically significant and repurposed Barnes School. The program serving infants and toddlers occupies a central space (originally a cafeteria) featuring terra cotta ceiling vaults and light wells for daylighting. Children's Investment Fund (CIF), an organization dedicated to improving child care in Massachusetts, retained DWAAA to review applications for Early Education and Out of School Time (EEOST) grant funding as well as to review awarded projects throughout construction. Our reviews focus on quality levels (QRIS) and environmental considerations.

Construction Cost: \$860,000

Completion Date: 9/1/2021

Community Action, Inc.

Haverhill, Massachusetts

Community Action, Inc occupies an historic 1906 school building with adjacent play yards. This renovation project includes upgrades to infrastructure to bring the environment into closer compliance with current best practices. A new HVAC system is currently being redesigned to improve filtration and air quality in conjunction with a new focus on the corona virus pandemic.

Children's Investment Fund (CIF), an organization dedicated to improving child care in Massachusetts, retained DWAAA to review applications for Early Education and Out of School Time (EEOST) grant funding as well as to review awarded projects throughout construction. Our reviews focus on quality levels (QRIS) and environmental considerations.

Construction Cost: \$1.25 M est.

Completion Date: 6/1/2021

D. W. ARTHUR ASSOCIATES ARCHITECTURE

Representative Child Care and Early Education Project List

Horizons for Homeless

Boston, Massachusetts

Funded in part through CIF, Horizons for Homeless consolidated a number of centers into a large new mixed-use facility on Columbus Avenue. The center will occupy two floors, with playgrounds flanking classrooms on the lower level (which is still above grade offering better privacy and security).

Children's Investment Fund (CIF), an organization dedicated to improving child care in Massachusetts, retained DWAAA to review applications for Early Education and Out of School Time (EEOST) grant funding as well as to review awarded projects throughout construction. Our reviews focus on quality levels (QRIS) and environmental considerations.

Construction Cost: \$15M est.

Completion Date: 6/1/2021

Metrowest YMCA- EEOST Pre-Grant Design Review

Framingham, Massachusetts

Children's Investment Fund (CIF) is an organization dedicated to improving child care in Massachusetts. Targeting mostly lower income families, CIF provides technical support and administers grant funding to child care centers serving economically challenged areas in the state. DWAAA was retained by CIF to provide consulting services in the review of applications for grant funding from a number of centers planning additions and improvements to their physical spaces. Our reviews focused on quality levels (QRIS) and environmental considerations.

Construction Cost: TBD

Completion Date: 1/1/2021

YWCA Cape Cod- EEOST Pre-Grant Design Review

Hyannis, Massachusetts

The YWCA is planning an adaptive reuse of a mixed use property in a residential complex to create a new children's center. In addition to generous classrooms, the center will feature a new playground occupying a central courtyard defined by surrounding buildings.

Children's Investment Fund (CIF) is an organization dedicated to improving child care in Massachusetts. Targeting mostly lower income families, CIF provides technical support and administers grant funding to child care centers serving economically challenged areas in the state. DWAAA has been assisting CIF with the review of applications from a number of providers planning additions and improvements to their physical spaces. Our reviews focus on quality levels (QRIS) and environmental considerations.

Construction Cost: TBD

Completion Date: 1/1/2020

Soldiers Field Park Children's Center - Harvard University

Allston, Massachusetts

Harvard University has undertaken a comprehensive rehabilitation program for the housing properties serving the business school. DWAAA worked closely with the residential redevelopment and child care teams to integrate a new indoor and outdoor children's realm that reenvisioned the 50 year old Soldiers Field Park Children's Center environment to support contemporary learning and development programs. The classrooms and enhancement spaces are organized on two floors around a central double-height core space that accommodates a variety of community activities. The design includes an open activity stair that incorporates stepped platform seating, a convertible performance space, a children's library, reading nooks, and other opportunities for gathering and exploration.

Construction Cost: \$5,492,000

Completion Date: 6/1/2021

Community Children's Center - Middlebury

Middlebury, Vermont

Middlebury College is spearheading an effort to consolidate two existing children's centers and expand capacity with a new state-of-the-art early learning center for the greater community. DWAAA has been working with a comprehensive team to evaluate options and select a site, to develop the ultimate design, and to assist in delivery of this new model facility.

Construction Cost: \$10M est

Completion Date: 6/1/2024

United South End Settlements

Boston, MA

DWAAA was invited by United South End Settlements and Utile to collaborate on the design of a thorough renovation and expansion to USES current property on Rutland Street in Boston's South End. The project is expected to include preschool and school age classrooms and support programs, including expansive multipurpose spaces, a roof-top outdoor classroom and an art studio.

Construction Cost: TBD

Completion Date: 9/1/2025

D. W. ARTHUR ASSOCIATES ARCHITECTURE

Representative Child Care and Early Education Project List

United Teen Equality Center (UTEC) - PEEL Post-occupancy Assessment

Lowell, Massachusetts

In connection with broad efforts to improve the quality of early education and after-school environments across Massachusetts, DWAAA was invited to perform assessments for a series of projects selected to receive funding through the Children's Investment Fund. We utilized an emerging assessment standard entitled PEEL (Physical Environments for Early Learning - A rating scale for center-based programs). This assessment reviewed an expanded building for ELC, pre-school programs.

Construction Cost: \$500K est

Completion Date: 6/1/2019

Epiphany School Early Learning Center

Dorchester, Massachusetts

In connection with broad efforts to improve the quality of early education and after-school environments across Massachusetts, DWAAA was invited to perform assessments for a series of projects selected to receive funding through the Children's Investment Fund. We utilized an emerging assessment standard entitled PEEL (Physical Environments for Early Learning - A rating scale for center-based programs). This assessment reviewed an expanded building for ELC, pre-school programs.

Construction Cost: TBD

Completion Date: 12/31/2018

Aspire Development Services - PEEL Post-Construction Assessment

Lynn, Massachusetts

In connection with broad efforts to improve the quality of early education and after-school environments across Massachusetts, DWAAA was invited to perform assessments for a series of projects selected to receive funding through the Children's Investment Fund. We utilized an emerging assessment standard entitled PEEL (Physical Environments for Early Learning - A rating scale for center-based programs). This assessment reviewed an expanded building for ELC, pre-school programs.

Construction Cost: TBD

Completion Date: 12/20/2018

Rainbow Child Development Center - PEEL post-Assessment

Worcester, Massachusetts

In connection with broad efforts to improve the quality of early education and after-school environments across Massachusetts, DWAAA was invited to perform assessments for a series of projects selected to receive funding through the Children's Investment Fund. We utilized an emerging assessment standard entitled PEEL (Physical Environments for Early Learning - A rating scale for center-based programs). This assessment reviewed an expanded building for ELC, pre-school programs.

Construction Cost: TBD

Completion Date: 12/10/2018

Tri-Community YMCA - PEEL post-Assessment

Southbridge, Massachusetts

In connection with broad efforts to improve the quality of early education and after-school environments across Massachusetts, DWAAA was invited to perform assessments for a series of projects selected to receive funding through the Children's Investment Fund. We utilized an emerging assessment standard entitled PEEL (Physical Environments for Early Learning - A rating scale for center-based programs). This assessment reviewed an expanded building for ELC, pre-school programs.

Construction Cost: \$1M est

Completion Date: 11/30/2018

Community Art Center - PEEL Post-Construction Assessment

Cambridge, Massachusetts

In connection with broad efforts to improve the quality of early education and after-school environments across Massachusetts, DWAAA was invited to perform assessments for a series of projects selected to receive funding through the Children's Investment Fund. We utilized an emerging assessment standard entitled PEEL (Physical Environments for Early Learning - A rating scale for center-based programs). This assessment reviewed an expanded building for ELC, pre-school programs.

Construction Cost: \$1M est

Completion Date: 1/23/2019

D. W. ARTHUR ASSOCIATES ARCHITECTURE

Representative Child Care and Early Education Project List

Citizens for Citizens - EEOST Post-Grant Design Review

Fall River, Massachusetts

Children's Investment Fund (CIF) is an organization dedicated to improving child care in Massachusetts. Targeting mostly lower income families, CIF provides technical support and administers grant funding to child care centers serving economically challenged areas in the state. DWAAA was retained by CIF to provide consulting services in the review of applications for grant funding from a number of centers planning additions and improvements to their physical spaces. Our reviews focused on quality levels (QRIS) and environmental considerations.

Construction Cost: TBD

Completion Date: 1/1/2020

International Children's Academy

Budd Lake, NJ

Originally designed and constructed in 1994, this free-standing building was developed by the Rockefeller Group to provide child care to employees working in the surrounding office park. The interior was partly demolished for an anticipated change of use, then reconstructed for a new child care operator. We assisted with the design for the reconstruction to our original design, which has stood the test of 25 years.

Construction Cost: \$500K est

Completion Date: 6/1/2019

Educare Springfield- EEOST Post-Grant Design Review

Springfield, Massachusetts

Children's Investment Fund (CIF) is an organization dedicated to improving child care in Massachusetts. Targeting mostly lower income families, CIF provides technical support and administers grant funding to child care centers serving economically challenged areas in the state. DWAAA was retained by CIF to provide consulting services in the review of applications for grant funding from a number of centers planning additions and improvements to their physical spaces. Our reviews focused on quality levels (QRIS) and environmental considerations.

Construction Cost: \$15M est

Completion Date: 12/31/2019

Ellis Memorial- PEEL post-Assessment

Boston, Massachusetts

In connection with broad efforts to improve the quality of early education and after-school environments across Massachusetts, DWAAA was invited to perform assessments for a series of projects selected to receive funding through the Children's Investment Fund. We utilized an emerging assessment standard entitled PEEL (Physical Environments for Early Learning - A rating scale for center-based programs). This assessment reviewed an expanded building for ELC, pre-school programs.

Construction Cost: TBD

Completion Date: 6/21/2018

Merrimack YMCA - PEEL post construction assessment

Lawrence, Massachusetts

In connection with broad efforts to improve the quality of early education and after-school environments across Massachusetts, DWAAA was invited to perform assessments for a series of projects selected to receive funding through the Children's Investment Fund. We utilized an emerging assessment standard entitled PEEL (Physical Environments for Early Learning - A rating scale for center-based programs). This assessment reviewed an expanded building for ELC, pre-school programs.

Construction Cost: TBD

Completion Date: 6/9/2018

Guild of St. Agnes - PEEL post-Assessment

Webster, Massachusetts

In connection with broad efforts to improve the quality of early education and after-school environments across Massachusetts, DWAAA was invited to perform assessments for a series of projects selected to receive funding through the Children's Investment Fund. We utilized an emerging assessment standard entitled PEEL (Physical Environments for Early Learning - A rating scale for center-based programs). This assessment reviewed an expanded building for ELC, pre-school programs.

Construction Cost: TBD

Completion Date: 11/15/2018

D. W. ARTHUR ASSOCIATES ARCHITECTURE

Representative Child Care and Early Education Project List

Cambridge Preschool for the Arts - Concord Avenue

Cambridge, Massachusetts

Cambridge Preschool for the Arts invited us to assist the design for renovations of an existing complex to accommodate their new early education program. The design includes careful attention to spatial overlaps, multipurpose spaces, and other characteristics of the two story environment. We also designed renovations to the exterior to optimize parking, playgrounds, entrance and street presence.

Construction Cost: withheld

Completion Date: 12/1/2018

Cambridge Preschool for the Arts - East Cambridge

Cambridge, Massachusetts

Cambridge Preschool for the Arts invited us to assist with the expansion of their original center in East Cambridge, MA. We are providing on-going design consultation to the team, for creative development of a second floor space, including a Reggio-inspired atelier and considerable multipurpose transformability.

Construction Cost: withheld

Completion Date: 4/1/2019

Wonder of Learning

Boston, MA

The Wonder of Learning is an exhibition and series of lectures/workshops dedicated to sharing the principles of the Reggio Emilia pedagogy throughout New England.

DWA was invited to speak and participate as a panelist on the impact of Reggio on the design of the built environment, at a session on 8/28/18.

Construction Cost: N/A

Completion Date: 8/20/2018

First Parish Lincoln - Playground Renovations

Lincoln, Massachusetts

This project updates the exterior playyards for a 50-year-old cooperative nursery school, the interior spaces of which we renovated in 2000. The design updates the exterior environment to be supportive of contemporary approaches to early childhood development and to better integrate with the rural town-center character in which it is located. The design integrates elements constructed by parent volunteers with the existing topography and mature trees.

Construction Cost: \$90K est

Completion Date: 12/1/2018

Belchertown Day School- EEOST Post-Grant Design Review

Belchertown, Massachusetts

Children's Investment Fund (CIF) is an organization dedicated to improving child care in Massachusetts. Targeting mostly lower income families, CIF provides technical support and administers grant funding to child care centers serving economically challenged areas in the state. DWAAA was retained by CIF to provide consulting services in the review of applications for grant funding from a number of centers planning additions and improvements to their physical spaces. Our reviews focused on quality levels (QRIS) and environmental considerations.

Construction Cost: TBD

Completion Date: 1/1/2020

Cape Cod Child Dev Program- EEOST Pre-Grant Design Review

Falmouth, Massachusetts

Children's Investment Fund (CIF) is an organization dedicated to improving child care in Massachusetts. Targeting mostly lower income families, CIF provides technical support and administers grant funding to child care centers serving economically challenged areas in the state. DWAAA was retained by CIF to provide consulting services in the review of applications for grant funding from a number of centers planning additions and improvements to their physical spaces. Our reviews focused on quality levels (QRIS) and environmental considerations.

Construction Cost: TBD

Completion Date: 8/1/2019

Horizons for Homeless- EEOST Pre-Grant Design Review

Roxbury, Massachusetts

Children's Investment Fund (CIF) is an organization dedicated to improving child care in Massachusetts. Targeting mostly lower income families, CIF provides technical support and administers grant funding to child care centers serving economically challenged areas in the state. DWAAA was retained by CIF to provide consulting services in the review of applications for grant funding from a number of centers planning additions and improvements to their physical spaces. Our reviews focused on quality levels (QRIS) and environmental considerations.

Construction Cost: TBD

Completion Date: 4/1/2018

D. W. ARTHUR ASSOCIATES ARCHITECTURE

Representative Child Care and Early Education Project List

HCS Headstart Educare- EEOST Pre-Grant Design Review

Springfield, Massachusetts

Children's Investment Fund (CIF) is an organization dedicated to improving child care in Massachusetts. Targeting mostly lower income families, CIF provides technical support and administers grant funding to child care centers serving economically challenged areas in the state. DWAAA was retained by CIF to provide consulting services in the review of applications for grant funding from a number of centers planning additions and improvements to their physical spaces. Our reviews focused on quality levels (QRIS) and environmental considerations.

Construction Cost: approx \$15M

Completion Date: 12/1/2019

Citizens for Citizens- EEOST Pre-Grant Design Review

Fall River, Massachusetts

Children's Investment Fund (CIF) is an organization dedicated to improving child care in Massachusetts. Targeting mostly lower income families, CIF provides technical support and administers grant funding to child care centers serving economically challenged areas in the state. DWAAA was retained by CIF to provide consulting services in the review of applications for grant funding from a number of centers planning additions and improvements to their physical spaces. Our reviews focused on quality levels (QRIS) and environmental considerations.

Construction Cost: TBD

Completion Date: 11/1/2019

For Kids Only "Youth in Motion"

Revere, Massachusetts

In connection with broad efforts to improve the quality of early education and after-school environments across Massachusetts, DWAAA was invited to perform assessments for a series of projects selected to receive funding through the Children's Investment Fund. We utilized an emerging assessment standard entitled PEEL (Physical Environments for Early Learning - A rating scale for center-based programs). This assessment reviewed an expanded building for ELC, pre-school programs.

Construction Cost: TBD

Completion Date: 12/5/2017

Monument Square- EEOST Post-Grant Design Review

North Adams, Massachusetts

Children's Investment Fund (CIF) is an organization dedicated to improving child care in Massachusetts. Targeting mostly lower income families, CIF provides technical support and administers grant funding to child care centers serving economically challenged areas in the state. DWAAA was retained by CIF to provide consulting services in the review of applications for grant funding from a number of centers planning additions and improvements to their physical spaces. Our reviews focused on quality levels (QRIS) and environmental considerations.

Construction Cost: TBD

Completion Date: 1/1/2021

YWCA SE Mass- EEOST Post-Grant Design Review

New Bedford, Massachusetts

Children's Investment Fund (CIF) is an organization dedicated to improving child care in Massachusetts. Targeting mostly lower income families, CIF provides technical support and administers grant funding to child care centers serving economically challenged areas in the state. DWAAA was retained by CIF to provide consulting services in the review of applications for grant funding from a number of centers planning additions and improvements to their physical spaces. Our reviews focused on quality levels (QRIS) and environmental considerations.

Construction Cost: TBD

Completion Date: 12/1/2019

SolBe Center for Early Education

West Roxbury, Massachusetts

SolBe, a new early education organization, invited us to assist their team with the design of their first center in West Roxbury, MA. We are providing on-going design consultation to the team, primarily Supernormal, the architect retained by SolBe for the project. Our focus is on best practices and quality standards, and assisting the design team with the inclusion of these considerations as the renovation proceeds.

Construction Cost: TBD

Completion Date: 2/1/2019

D. W. ARTHUR ASSOCIATES ARCHITECTURE

Representative Child Care and Early Education Project List

Community Art Center - PEEL Pre Assessment

Cambridge, Massachusetts

In connection with broad efforts to improve the quality of early education and after-school environments across Massachusetts, DWAAA was invited to perform assessments for a series of projects selected to receive funding through the Children's Investment Fund. We utilized an emerging assessment standard entitled PEEL (Physical Environments for Early Learning - A rating scale for center-based programs). This assessment reviewed an expanded building for ELC, pre-school programs.

Construction Cost: TBD

Completion Date: 12/4/2017

Child Care Associates - Style Guide

Ft Worth, Texas

In addition to the prototype classrooms we designed for infants, toddlers and PreK-3 children, Child Care Associates invited us to develop a "style guide" intended to assist local designers with the development of new centers. Including basic design guidelines along with material and finishes recommendations, the guide is will be distributed to support in CCA's commitment to the promulgation of quality standards.

Construction Cost: N/A

Completion Date: 10/30/2017

Child Care Associates - Training Lab Classrooms

Ft Worth, Texas

In support of Child Care Associates campaign to improve early education environments throughout Texas, DWAAA was invited to design "training lab" classrooms for CCA's headquarters. These classrooms, based on the prototypes we also developed for CCA, will be utilized to both educate caregivers about optimal physical environments and to demonstrate best practices.

Construction Cost: TBD

Completion Date: 1/1/2021

Prototype Classrooms - Child Care Associates

Ft Worth, Texas

Child Care Associates invited us to develop designs for prototype classrooms for infants, toddlers and PreK-3 children to help them promote improved environments throughout Texas. CCA operates many Head Start and Early Head Start programs and wishes to establish a new, higher quality standard, as an example for all programs. Our designs will be illustrated in immersive and interactive renderings, accompanied by a "style guide" to assist in the promulgation of quality standards.

Construction Cost: N/A

Completion Date: 10/30/2017

Valley Opportunity Council - PEEL Assessment

Chicopee, Massachusetts

In connection with broad efforts to improve the quality of early education and after-school environments across Massachusetts, DWAAA was invited to perform assessments for a series of projects selected to receive funding through the Children's Investment Fund. We utilized an emerging assessment standard entitled PEEL (Physical Environments for Early Learning - A rating scale for center-based programs). This assessment reviewed an expanded building for ELC, pre-school programs.

Construction Cost: TBD

Completion Date: 10/27/2017

Tri-Community YMCA - PEEL Pre-Construction Assessment

Southbridge, Massachusetts

In connection with broad efforts to improve the quality of early education and after-school environments across Massachusetts, DWAAA was invited to perform assessments for a series of projects selected to receive funding through the Children's Investment Fund. We utilized an emerging assessment standard entitled PEEL (Physical Environments for Early Learning - A rating scale for center-based programs). This assessment reviewed an expanded building for ELC, pre-school programs.

Construction Cost: TBD

Completion Date: 10/3/2017

Pathways to Nature Preschool

Mattapan, Massachusetts

Boston Nature Center, wildlife sanctuary owned by the Massachusetts Audubon Society, invited us to design an expansion to their "Pathways to Nature" preschool program. The program currently occupies two residential structures on the refuge, and the expansion design includes a new pavilion that will reinforce the preschool campus and optimize connections with the natural world.

Construction Cost: \$1.2 M

Completion Date: 1/1/2023

D. W. ARTHUR ASSOCIATES ARCHITECTURE

Representative Child Care and Early Education Project List

Design Guidelines Training sessions

Boston and Quincy, Massachusetts

Children's Investment Fund (CIF) is an organization dedicated to improving child care in Massachusetts. DWAAA was invited by CIF to develop a Design Guidelines book to assist with the improvements of physical environments. These guidelines were developed in part to encourage better coordination with the Massachusetts EEC licensing authority, and target specific areas of quality that deserve careful scrutiny and collective focus. Dogan Arthur conducted two workshops to help advance this effort.

Construction Cost: N/A

Completion Date: 5/1/2019

Aspire - PEEL Pre-Construction Assessment

Lynn, Massachusetts

In connection with broad efforts to improve the quality of early education and after-school environments across Massachusetts, DWAAA was invited to perform assessments for a series of projects selected to receive funding through the Children's Investment Fund. We utilized an emerging assessment standard entitled PEEL (Physical Environments for Early Learning - A rating scale for center-based programs). This assessment reviewed an expanded building for ELC, pre-school programs.

Construction Cost: TBD

Completion Date: 10/3/2017

Soldiers Field Park Child Care Center - Temporary Building

Allston, Massachusetts

Harvard University has undertaken a comprehensive rehabilitation program for the housing properties serving the business school. DWAAA has been assisting Harvard with master planning, phasing and design to accommodate the Soldiers Field Park Children's Center program during these substantial construction projects. The first phase includes a temporary modular center to replicate a portion of the original center we designed in 2008. The temporary facility will include "Murphy tables" and other innovations we introduced in the original facility.

Construction Cost: TBD

Completion Date: 8/1/2018

114 Western Avenue Child Care Center

Allston, Massachusetts

As part of Harvard University's redevelopment of a large swath of Allston adjacent to the business school, DWAAA was invited to design the new children's center that will serve this significant expansion to the university's campus. Adjacent to the new facilities for the School of Engineering and Applied Sciences, this new state-of-the-art center occupies the ground floor of a repurposed building. The new center is situated near the new Mobility Hub and includes an adjacent set of playgrounds designed to be integrated with new circulation pathways, a public plaza and other improvements that form a central focus for this new Harvard campus epicenter.

Construction Cost: 6379000

Completion Date: 12/1/2019

Beverly Children's Center - PEEL Assessment

Beverly, Massachusetts

In connection with broad efforts to improve the quality of early education and after-school environments across Massachusetts, DWAAA was invited to perform assessments for a series of projects selected to receive funding through the Children's Investment Fund. We utilized an emerging assessment standard entitled PEEL) Physical Environments for Early Learning - A rating scale for center-based programs). This assessment reviewed a renovated building for ELC, pre-school and OST programs.

Construction Cost: withheld

Completion Date: 5/1/2017

Catholic CBA - PEEL Assessment

Lynn, Massachusetts

In connection with broad efforts to improve the quality of early education and after-school environments across Massachusetts, DWAAA was invited to perform assessments for a series of projects selected to receive funding through the Children's Investment Fund. We utilized an emerging assessment standard entitled PEEL (Physical Environments for Early Learning - A rating scale for center-based programs). This assessment reviewed a renovated building for ELC, pre-school programs.

Construction Cost: withheld

Completion Date: 5/1/2017

D. W. ARTHUR ASSOCIATES ARCHITECTURE

Representative Child Care and Early Education Project List

YMCA Metro North - EEOST Grant Design Review

Lynn, Massachusetts

Children's Investment Fund (CIF) is an organization dedicated to improving child care in Massachusetts. Targeting mostly lower income families, CIF provides technical support and administers grant funding to child care centers serving economically challenged areas in the state. DWAAA was retained by CIF to provide consulting services in the review of applications for grant funding from a number of centers planning additions and improvements to their physical spaces. Our reviews focused on quality levels (QRIS) and environmental considerations.

Construction Cost: TBD

Completion Date: 4/15/2017

Westfield Child Center - EEOST Grant Design Review

Brockton, Massachusetts

Children's Investment Fund (CIF) is an organization dedicated to improving child care in Massachusetts. Targeting mostly lower income families, CIF provides technical support and administers grant funding to child care centers serving economically challenged areas in the state. DWAAA was retained by CIF to provide consulting services in the review of applications for grant funding from a number of centers planning additions and improvements to their physical spaces. Our reviews focused on quality levels (QRIS) and environmental considerations.

Construction Cost: varies

Completion Date: 4/15/2017

Belchertown Day School - EEOST Grant Design Review

Belchertown, Massachusetts

Children's Investment Fund (CIF) is an organization dedicated to improving child care in Massachusetts. Targeting mostly lower income families, CIF provides technical support and administers grant funding to child care centers serving economically challenged areas in the state. DWAAA was retained by CIF to provide consulting services in the review of applications for grant funding from a number of centers planning additions and improvements to their physical spaces. Our reviews focused on quality levels (QRIS) and environmental considerations.

Construction Cost: varies

Completion Date: 4/15/2017

Child Care of the Berkshires - EEOST Grant Design Review

No. Adams, Massachusetts

Children's Investment Fund (CIF) is an organization dedicated to improving child care in Massachusetts. Targeting mostly lower income families, CIF provides technical support and administers grant funding to child care centers serving economically challenged areas in the state. DWAAA was retained by CIF to provide consulting services in the review of applications for grant funding from a number of centers planning additions and improvements to their physical spaces. Our reviews focused on quality levels (QRIS) and environmental considerations.

Construction Cost: varies

Completion Date: 4/15/2017

Citizens for Citizens - EEOST Grant Design Review

Fall River, Massachusetts

Children's Investment Fund (CIF) is an organization dedicated to improving child care in Massachusetts. Targeting mostly lower income families, CIF provides technical support and administers grant funding to child care centers serving economically challenged areas in the state. DWAAA was retained by CIF to provide consulting services in the review of applications for grant funding from a number of centers planning additions and improvements to their physical spaces. Our reviews focused on quality levels (QRIS) and environmental considerations.

Construction Cost: varies

Completion Date: 4/15/2017

Rainbow CDC - PEEL Assessment

Worcester, Massachusetts

In connection with broad efforts to improve the quality of early education and after-school environments across Massachusetts, DWAAA was invited to perform assessments for a series of projects selected to receive funding through the Children's Investment Fund. We utilized an emerging assessment standard entitled PEEL (Physical Environments for Early Learning - A rating scale for center-based programs). This assessment reviewed a proposed playground renovation for existing pre-school and OST program.

Construction Cost: withheld

Completion Date: 4/15/2017

D. W. ARTHUR ASSOCIATES ARCHITECTURE

Representative Child Care and Early Education Project List

Markman Children's Programs - PEEL Assessment

Attleboro, Massachusetts

In connection with broad efforts to improve the quality of early education and after-school environments across Massachusetts, DWAAA was invited to perform assessments for a series of projects selected to receive funding through the Children's Investment Fund. We utilized an emerging assessment standard entitled PEEL (Physical Environments for Early Learning - A rating scale for center-based programs). This assessment reviewed an expanded building for ELC, pre-school programs.

Construction Cost: withheld

Completion Date: 4/1/2017

Epiphany School ELC - EEOST Grant Design Review

Boston, Massachusetts

Children's Investment Fund (CIF) is an organization dedicated to improving child care in Massachusetts. Targeting mostly lower income families, CIF provides technical support and administers grant funding to child care centers serving economically challenged areas in the state. DWAAA was retained by CIF to provide consulting services in the review of programs receiving grants and implementing improvements to their physical spaces. Our reviews focused on quality levels (QRIS) and environmental considerations.

Construction Cost: withheld

Completion Date: 8/1/2017

Ellis Memorial ELC - EEOST Grant Design Review

Boston, Massachusetts

Children's Investment Fund (CIF) is an organization dedicated to improving child care in Massachusetts. Targeting mostly lower income families, CIF provides technical support and administers grant funding to child care centers serving economically challenged areas in the state. DWAAA was retained by CIF to provide consulting services in the review of programs receiving grants and implementing improvements to their physical spaces. Our reviews focused on quality levels (QRIS) and environmental considerations.

Construction Cost: withheld

Completion Date: 7/1/2017

Rainbow CDC - EEOST Grant Design Review

Worcester, Massachusetts

Children's Investment Fund (CIF) is an organization dedicated to improving child care in Massachusetts. Targeting mostly lower income families, CIF provides technical support and administers grant funding to child care centers serving economically challenged areas in the state. DWAAA was retained by CIF to provide consulting services in the review of programs receiving grants and implementing improvements to their physical spaces. Our reviews focused on quality levels (QRIS) and environmental considerations.

Construction Cost: TBD

Completion Date: 6/1/2017

Aspire - EEOST Grant Design Review

Lynn, Massachusetts

Children's Investment Fund (CIF) is an organization dedicated to improving child care in Massachusetts. Targeting mostly lower income families, CIF provides technical support and administers grant funding to child care centers serving economically challenged areas in the state. DWAAA was retained by CIF to provide consulting services in the review of programs receiving grants and implementing improvements to their physical spaces. Our reviews focused on quality levels (QRIS) and environmental considerations.

Construction Cost: withheld

Completion Date: 8/1/2017

BSC Quality Spaces Presentation

Boston, Massachusetts

Children's Investment Fund (CIF) is an organization dedicated to improving child care in Massachusetts. Targeting mostly lower income families, CIF provides technical support and administers grant funding to child care centers serving economically challenged areas in the state. DWAAA was retained by CIF to prepare and deliver a presentation covering the design of high-quality environments for young children.

Construction Cost: varies

Completion Date: 11/1/2016

D. W. ARTHUR ASSOCIATES ARCHITECTURE

Representative Child Care and Early Education Project List

Robinson Place Learning Center

Monroe, Louisiana

The Louisiana Endowment for the Humanities (LEH) was recently awarded the federal contract to operate Head Start programs serving Ouachita Parish in northeastern Louisiana. DWAAA was invited to assist the LEH in the assessment of preexisting facilities and with improvements to environments to serve about 600 children. We are working with LEH to convert this recent structure for Head Start use, including a new playground and entrance, and reconfiguration of interior rooms.

Construction Cost: \$250,000 est.

Completion Date: 6/1/2017

Ouachita Parish Head Start

Monroe, LA

The Louisiana Endowment for the Humanities (LEH) was recently awarded the federal contract to operate Head Start programs serving Ouachita Parish in northeastern Louisiana. DWAAA was invited to assist the LEH in the assessment of preexisting facilities and with improvements to environments to serve about 600 children.

Construction Cost: TBD

Completion Date: 4/1/2017

Reed Head Start

Monroe, LA

The Louisiana Endowment for the Humanities (LEH) was recently awarded the federal contract to operate Head Start programs serving Ouachita Parish in northeastern Louisiana. DWAAA was invited to assist the LEH in the assessment of preexisting facilities and with improvements to environments to serve about 600 children. This building dates from the 1940s and has been expanded numerous times over the years. It is currently undergoing analysis to establish next steps.

Construction Cost: TBD

Completion Date: 4/1/2017

Thomas and Wilson Head Start

Monroe, Louisiana

The Louisiana Endowment for the Humanities (LEH) was recently awarded the federal contract to operate Head Start programs serving Ouachita Parish in northeastern Louisiana. DWAAA was invited to assist the LEH in the assessment of preexisting facilities and with improvements to environments to serve about 600 children. This center is of recent vintage, and we have designed improvements to add capacity and develop a nature-based playground taking advantage of extensive open land.

Construction Cost: \$400,000 est

Completion Date: 3/1/2017

Jackson Head Start

Monroe, Louisiana

The Louisiana Endowment for the Humanities (LEH) was recently awarded the federal contract to operate Head Start programs serving Ouachita Parish in northeastern Louisiana. DWAAA was invited to assist the LEH in the assessment of preexisting facilities and with improvements to environments to serve about 600 children. This center is was created from a defunct business school and needs significant renovations to transform it into a program reflecting current Head Start standards.

Construction Cost: \$800,000 est.

Completion Date: 3/1/2017

Birches School

Lincoln, Massachusetts

Birches School, an independent elementary school, invited us to conduct feasibility study and develop a master plan for their new home. We worked closely with them and the Town of Lincoln to design a site plan that incorporated a new athletic field for the town as well as an extensive outdoor learning environment that connects to a town-wide trail network incorporating extensive conservation land.

Construction Cost: TBD

Completion Date: 10/30/2017

Ethos Child Care Center

South Boston, Massachusetts

Ethos is a startup company committed to creating very high quality early education and child care programs for millennials and other young families. Ethos invited DWAAA to assist with site evaluation and design for a first center to pilot their operations. The space occupies the repurposed top floor of heavy-timber mercantile building on a main street in historic South Boston. The location is critical to serving younger families with strong ties to Boston's seaport "Innovation District".

Construction Cost: withheld

Completion Date: 11/1/2017

D. W. ARTHUR ASSOCIATES ARCHITECTURE

Representative Child Care and Early Education Project List

Godine Early Learning Center - Preschool renovations

Newton, Massachusetts

The Jewish Community Centers of Greater Boston operates a large early education program at their Newton headquarters, a sprawling hillside complex. The preschool program is expanding into a former dance studio with high ceilings and excellent daylight. JCC invited DWAAA to design renovations that will make this space appropriate for preschoolers while maintaining the spaciousness and daylight and views.

Construction Cost: \$60,000. est

Completion Date: 12/1/2016

Merrimack Valley YMCA - PEEL Assessment

Lawrence, Massachusetts

In connection with broad efforts to improve the quality of early education and after-school environments across Massachusetts, DWAAA was invited to perform assessments for a series of projects selected to receive funding through the Children's Investment Fund. We utilized an emerging assessment standard entitled PEEL (Physical Environments for Early Learning - A rating scale for center-based programs). This assessment established baseline quality of an existing YMCA program prior to improvements.

Construction Cost:

Completion Date: 4/15/2016

Ellis Memorial - PEEL Assessment

Boston, Massachusetts

In connection with broad efforts to improve the quality of early education and after-school environments across Massachusetts, DWAAA was invited to perform assessments for a series of projects selected to receive funding through the Children's Investment Fund. We utilized an emerging assessment standard entitled PEEL (Physical Environments for Early Learning - A rating scale for center-based programs). This assessment established baseline quality of an existing OST program prior to improvements for pre-school.

Construction Cost:

Completion Date: 4/15/2016

121 Seaport Boulevard Child Care Center

Boston, MA

Skanska, a major property development firm, retained us to assist in the assessment of options for the integration of a new children's center and playground into a new mixed-use development in Boston's seaport "Innovation District".

Construction Cost:

Completion Date: 7/1/2016

For Kids Only - PEEL Assessment

Revere, Massachusetts

In connection with broad efforts to improve the quality of early education and after-school environments across Massachusetts, DWAAA was invited to perform assessments for a series of projects selected to receive funding through the Children's Investment Fund. We utilized an emerging assessment standard entitled PEEL (Physical Environments for Early Learning - A rating scale for center-based programs). This assessment evaluated the quality of an existing OST (out of school time) program to provide baseline information.

Construction Cost:

Completion Date: 4/1/2016

YWCA SE Mass - EEOST Grant Design Review

New Bedford, Massachusetts

Children's Investment Fund (CIF) is an organization dedicated to improving child care in Massachusetts. Targeting mostly lower income families, CIF provides technical support and administers grant funding to child care centers serving economically challenged areas in the state. DWAAA was retained by CIF to provide consulting services in the review of applications for grant funding from a number of centers planning additions and improvements to their physical spaces. Our reviews focused on quality levels (QRIS) and environmental considerations.

Construction Cost: varies

Completion Date: 5/1/2016

YMCA Metro North- EEOST Grant Design Review

Lynn, Massachusetts

Children's Investment Fund (CIF) is an organization dedicated to improving child care in Massachusetts. Targeting mostly lower income families, CIF provides technical support and administers grant funding to child care centers serving economically challenged areas in the state. DWAAA was retained by CIF to provide consulting services in the review of applications for grant funding from a number of centers planning additions and improvements to their physical spaces. Our reviews focused on quality levels (QRIS) and environmental considerations.

Construction Cost: varies

Completion Date: 5/1/2016

D. W. ARTHUR ASSOCIATES ARCHITECTURE

Representative Child Care and Early Education Project List

Epiphany School- EEOST Grant Design Review

Dorchester, Massachusetts

Children's Investment Fund (CIF) is an organization dedicated to improving child care in Massachusetts. Targeting mostly lower income families, CIF provides technical support and administers grant funding to child care centers serving economically challenged areas in the state. DWAAA was retained by CIF to provide consulting services in the review of applications for grant funding from a number of centers planning additions and improvements to their physical spaces. Our reviews focused on quality levels (QRIS) and environmental considerations.

Construction Cost: varies

Completion Date: 5/1/2016

YWCA Greater Lawrence- EEOST Grant Design Review

Lawrence, Massachusetts

Children's Investment Fund (CIF) is an organization dedicated to improving child care in Massachusetts. Targeting mostly lower income families, CIF provides technical support and administers grant funding to child care centers serving economically challenged areas in the state. DWAAA was retained by CIF to provide consulting services in the review of applications for grant funding from a number of centers planning additions and improvements to their physical spaces. Our reviews focused on quality levels (QRIS) and environmental considerations.

Construction Cost: varies

Completion Date: 5/1/2016

Cambridge Community Center (2)- Design Review

Cambridge, Massachusetts

Children's Investment Fund (CIF) is an organization dedicated to improving child care in Massachusetts. Targeting mostly lower income families, CIF provides technical support and administers grant funding to child care centers serving economically challenged areas in the state. DWAAA was retained by CIF to provide consulting services in the review of applications for grant funding from a number of centers planning additions and improvements to their physical spaces. Our reviews focused on quality levels (QRIS) and environmental considerations.

Construction Cost: varies

Completion Date: 5/1/2016

Modular Child Care Campus

TBD

Originally designed for potential border refugee locations, this modular campus has broad possibilities for deployment across the country and beyond.

Construction Cost: N/A

Completion Date: pending funding

NGN Children's Center - Acelero Learning Inc.

Racine, Wisconsin

Acelero Learning Inc. assumed management of an existing Head Start program located in a converted parochial school in Racine. Working with Acelero, DWAAA designed selective renovations to the existing center to optimize space utilization and bring the environment into closer conformance with current operational and pedagogical standards.

Construction Cost: \$300,000. est

Completion Date: 12/1/2017

Design Guide Revisions - RICCELFF/LISC

Providence, Rhode Island

In concert with a program to improve child care environments throughout Rhode Island, we were invited by the Child Care & Early Learning Facilities Fund (RICCELFF) to update a design guide we initially authored in 2006. Entitled "Designing Early Childhood Facilities", the guide is used broadly by various agencies engaged in efforts to assist programs with design and implementation projects targeting state-of-the-art standards for indoor and outdoor environments. RICCELFF is supported by the Local Initiatives Support Corporation (LISC), the largest community development support organization in the US.

Construction Cost: Varies

Completion Date: 5/1/2016

McLean Hospital Children's Center

Belmont, Massachusetts

McLean Hospital, the premier psychiatric hospital in the country, operates a child care center serving families of doctors and staff on their bucolic campus (designed by Frederick Law Olmsted) in Belmont, MA. DWAAA was invited to perform an assessment and initial designs for improvements to the space-constrained facility.

Construction Cost: TBD

Completion Date: 6/1/2015

D. W. ARTHUR ASSOCIATES ARCHITECTURE

Representative Child Care and Early Education Project List

Cooper Community Center

Boston, MA

As part of a master plan to perform sequenced improvements to an aging facility, Cooper Community Center retained DWAAA to assist with programming and design of the entrance sequence and public spaces in the children's center. Design proposals include reconfiguration of the recessed entrance into a welcoming gathering area along with carefully sequenced access points to help manage circulation through the building.

Construction Cost:

Completion Date:

7/1/2015

Design Guidelines for EEC/OST

Boston, Massachusetts

Children's Investment Fund (CIF) is an organization dedicated to improving child care in Massachusetts. Targeting mostly lower income families, CIF provides technical support and administers grant funding to child care centers serving economically challenged areas in the state. DWAAA was retained by CIF to develop design guidelines for use in the review of applications for grant funding from a number of centers planning additions and improvements to their physical spaces. focused on quality levels (QRIS) and environmental considerations.

Construction Cost: Varies

Completion Date:

5/1/2017

Children's Center at Assembly Row

Somerville, Massachusetts

Mass General Brigham (MGB includes MGH, Brigham and Women's, and other affiliates) consolidated administrative offices in a new complex that is part of the redevelopment of the Assembly Row area in Somerville. DWAAA was invited by MGB to design a new child care building to serve the large population who will work in this new complex. The center accommodates about 110 children, infant through preschool in a state-of-the-art early learning environment carefully designed to contribute to an evolving urban development and to provide safe, secure and inspirational spaces for children.

Construction Cost: \$8,259,000.

Completion Date:

10/1/2018

MIT Technology Children's Center - Site "O"

Cambridge, Massachusetts

As an integral component of extensive redevelopment of Kendall Square, MIT incorporated a new child care facility within a new high rise residential tower. DWAAA worked closely with Perkins + Will and NADAA to program, situate and design this new center. The child care occupies the 2nd floor, with a rooftop playground overlooking a newly formed "quad" on MIT's campus. This integration of the children's realm optimizes the program while ensuring safe, secure and delightful outdoor and indoor spaces.

Construction Cost: \$3,000,000 est.

Completion Date:

9/1/2020

Hattie Cooper - EEOST Grant Design Review

Boston, Massachusetts

Children's Investment Fund (CIF) is an organization dedicated to improving child care in Massachusetts. Targeting mostly lower income families, CIF provides technical support and administers grant funding to child care centers serving economically challenged areas in the state. DWAAA was retained by CIF to provide consulting services in the review of applications for grant funding from a number of centers planning additions and improvements to their physical spaces. Our reviews focused on quality levels (QRIS) and environmental considerations.

Construction Cost: varies

Completion Date:

12/19/2014

SE Mass YWCA - EEOST Grant Design Review

New Bedford, Massachusetts

Children's Investment Fund (CIF) is an organization dedicated to improving child care in Massachusetts. Targeting mostly lower income families, CIF provides technical support and administers grant funding to child care centers serving economically challenged areas in the state. DWAAA was retained by CIF to provide consulting services in the review of applications for grant funding from a number of centers planning additions and improvements to their physical spaces. Our reviews focused on quality levels (QRIS) and environmental considerations.

Construction Cost: varies

Completion Date:

12/16/2014

D. W. ARTHUR ASSOCIATES ARCHITECTURE

Representative Child Care and Early Education Project List

Ellis Memorial - EEOST Grant Design Review

Boston, Massachusetts

Children's Investment Fund (CIF) is an organization dedicated to improving child care in Massachusetts. Targeting mostly lower income families, CIF provides technical support and administers grant funding to child care centers serving economically challenged areas in the state. DWAAA was retained by CIF to provide consulting services in the review of applications for grant funding from a number of centers planning additions and improvements to their physical spaces. Our reviews focused on quality levels (QRIS) and environmental considerations.

Construction Cost: varies

Completion Date: 12/15/2014

YWCA South Coast - EEOST Grant Design Review

Fall River, Massachusetts

Children's Investment Fund (CIF) is an organization dedicated to improving child care in Massachusetts. Targeting mostly lower income families, CIF provides technical support and administers grant funding to child care centers serving economically challenged areas in the state. DWAAA was retained by CIF to provide consulting services in the review of applications for grant funding from a number of centers planning additions and improvements to their physical spaces. Our reviews focused on quality levels (QRIS) and environmental considerations.

Construction Cost: varies

Completion Date: 12/14/2014

For Kids Only - EEOST Grant Design Review

Everett, Massachusetts

Children's Investment Fund (CIF) is an organization dedicated to improving child care in Massachusetts. Targeting mostly lower income families, CIF provides technical support and administers grant funding to child care centers serving economically challenged areas in the state. DWAAA was retained by CIF to provide consulting services in the review of applications for grant funding from a number of centers planning additions and improvements to their physical spaces. Our reviews focused on quality levels (QRIS) and environmental considerations.

Construction Cost: varies

Completion Date: 12/10/2014

Cambridge Community Center - EEOST Grant Design Review

Cambridge, Massachusetts

Children's Investment Fund (CIF) is an organization dedicated to improving child care in Massachusetts. Targeting mostly lower income families, CIF provides technical support and administers grant funding to child care centers serving economically challenged areas in the state. DWAAA was retained by CIF to provide consulting services in the review of applications for grant funding from a number of centers planning additions and improvements to their physical spaces. Our reviews focused on quality levels (QRIS) and environmental considerations.

Construction Cost: varies

Completion Date: 12/1/2014

YMCA Greater Boston - Design Reviews

Boston, Massachusetts

Children's Investment Fund (CIF) is an organization dedicated to improving child care in Massachusetts. Targeting mostly lower income families, CIF provides technical support and administers grant funding to child care centers serving economically challenged areas in the state. DWAAA was retained by CIF to provide consulting services in the review of applications for grant funding from a number of centers planning additions and improvements to their physical spaces. Our reviews focused on quality levels (QRIS) and environmental considerations.

Construction Cost: varies

Completion Date: 12/1/2014

MGH Aspire - Hale Reservation Pavilion

Dover, Massachusetts

Hale Reservation is an educational organization that provides camp and other educational experiences for over 4,000 children on over 1,000 acres of land near Boston. MGH Aspire is dedicated to helping children and young adults with Asperger's Syndrome and related Autism Spectrum Disorders via a range of programs. Hale invited DWAAA to design a new multipurpose camp structure to accommodate the Aspire program as well as some of Hale's summer camp activities.

Construction Cost: \$400,000. (est.)

Completion Date: June, 2016

D. W. ARTHUR ASSOCIATES ARCHITECTURE

Representative Child Care and Early Education Project List

Acelero Learning - Green Street Children's Center

Racine, Wisconsin

Acelero Learning assumed management of an existing Head Start program located in a converted parochial school in Racine. Working with Acelero, DWAAA designed reconfigurations to create a much improved set of classrooms in the existing structure. Complex floor level changes and circulation challenges will be improved to optimize spatial relationships and to encourage a sense of community in the center.

Construction Cost: \$300,000. est

Completion Date: 9/1/2019

Johns Hopkins University - Homewood Children's Center

Baltimore, Maryland

Johns Hopkins University retained DWAAA to design a temporary children's center for their Homewood Campus. A campus master plan calls for a permanent facility in the coming decades, so this facility will address their growing early education needs into the immediate future. The modular building was fabricated off-site and trucked to the newly redeveloped site. The site is generous and the outdoor play spaces take advantage of both rolling topography and mature shade trees.

Construction Cost: \$3,500,000 (est.)

Completion Date: 7/1/2015

Cudahy Center Head Start

Milwaukee, Wisconsin

Acelero Learning invited DWAAA to design a new Head Start program within the shell of a retail mall in Milwaukee. The design includes considerable interior glass to allow for borrowed views and daylighting at interior classrooms, as well as abundant new windows in the building exterior.

Construction Cost: \$640,000.

Completion Date: 10/1/2015

Groton School Children's Center - Playgrounds

Groton, Massachusetts

Groton School invited DWAAA to redesign and expand the playgrounds for this center originally completed by the firm in 2000. The modest original outdoor play yards will be updated to include more open and expanded play opportunities, with a focus on natural learning. The original building complex forms a protected central courtyard which will support planting beds, and the rest of the outdoor spaces expand beyond into woods and open meadow.

Construction Cost: \$100,000 (est.)

Completion Date: project suspended

Godine Early Learning Center - Preschool renovations

Newton, Massachusetts

The Jewish Community Centers of Greater Boston operates a large early education program at their Newton headquarters, a sprawling hillside complex. The preschool program occupies a lofty second floor space was built as a wood shop, part of the orphanage that the complex originally comprised. JCC invited us to assist with the redesign of this space to be more appropriate to the preschool programs.

Construction Cost: \$60,000.

Completion Date: 9/1/2014

Amherst College Children's Center- Site Evaluation Study

Amherst Massachusetts

Amherst College invited us to assist them with an evaluation of numerous potential sites for the location of a new children's center. The existing center occupies a century old single family house which does not allow for the program to achieve quality goals expected by the college. The sites include existing buildings as well as "greenfield" options.

Construction Cost: TBD

Completion Date: 2/1/2014

Newton-Wellesley Hospital Children's Corner

Newton, Massachusetts

Newton-Wellesley Hospital (NWH) operates a children's center in an historic structure on their campus. As the facility has grown, the existing configuration has become limited, and condition of the interior has become tired. NWH invited us to provide an analysis of the facility including conceptual redesign. The project is now awaiting funding.

Construction Cost: TBD

Completion Date: 10/30/2013

D. W. ARTHUR ASSOCIATES ARCHITECTURE

Representative Child Care and Early Education Project List

Port Imperial Children's Center

West New York, New Jersey

This new children's center is being developed in a mixed use project immediately facing the ferry terminal that serves Manhattan. The facility will occupy the ground floor space facing east to the Hudson River and NYC beyond. The center is designed to be removable so that the space can be used as a pitstop during Formula 1 races that are scheduled for summers in West New York.

Construction Cost: TBD

Completion Date: 6/1/2014

Brandeis University - Lemberg Children's Center

Waltham, Massachusetts

Brandeis University invited DWAAA to design a new 7,000 square foot early education and child care center for their campus and community. The new building enables expanded programs to a 40+ year old program at the school. The design includes spaces which enable the psychology department to continue ongoing educational programs. A constrained and steeply sloped site inspired a two-story design, with age-appropriate playgrounds situated directly outside classrooms at both levels.

Construction Cost: \$2,915,000

Completion Date: 6/15/2014

Harvard University- Oxford Street Daycare Center - Playgrounds

Cambridge, Massachusetts

As part of an ongoing program to improve and expand Harvard University's child care facilities, we designed thorough renovations to the outdoor playgrounds for the Oxford Street Daycare Cooperative. This project follows on our full renovation to the interior spaces of the center, completed in 2010. As the program has been run as a cooperative, parents as well as staff were involved with the new design process. The renovation fully upgraded all infrastructure, as well as recreated the outdoor spaces to incorporate "natural" and flexible elements to bring the program into conformance with current best practices for early education and child care.

Construction Cost: \$200,000.

Completion Date: 5/1/2013

Y's Time Children's Center

St. Albans, Vermont

As part of our IDIQ contract with the US GSA (General Services Administration), we redesigned a 15 year old child care center in the Federal Building in St. Albans, Vermont. The center was upgraded to comply with current guidelines, codes and best practices for early education and care.

Construction Cost: \$250,000.

Completion Date: 5/1/2013

MIT Technology Children's Center - TCC Vassar

Cambridge, Massachusetts

Massachusetts Institute of Technology is committed to greatly expanding their on-campus child care programs to address increasing demand from current and prospective faculty, staff and students. MIT invited us to design the new 13,400 SF, 2- storey building, which has been constructed at 219 Vassar Street, next to a dorm and athletic fields. The new building was pre-fabricated off-site, then transported and reassembled on-site in order to reduce the overall construction schedule.

Construction Cost: \$6,900,000.

Completion Date: 10/30/2013

Above and Beyond Children's Center

Rochester Hills, Michigan

Kidz1st, a leading pediatric practice serving Rochester Hills community near Detroit, Michigan, plans to develop a new state-of-the-art child care facility as a part of their expanding involvement with the development and health of children. The program will be located on the ground floor of their existing building, which has the pediatric medical offices on the upper floor. The doctors plan to incorporate the most advanced thinking with respect to early childhood development, including ample access to natural outdoor playspaces.

Construction Cost: withheld

Completion Date: 4/1/2014

D. W. ARTHUR ASSOCIATES ARCHITECTURE

Representative Child Care and Early Education Project List

Social Services Administration Children's Center - Interiors

Woodlawn, Maryland

This center, managed by the General Services Administration (GSA), was developed in 2002 to serve employees at the Social Security Administration (SSA) headquarters campus, outside Baltimore. As part of efforts by both the SSA and the GSA to make improvements to the facility, we designed extensive renovations to the interior spaces of the center. These include complete reconfigurations of younger children's classrooms to incorporate current best practices and design principles, consistent with the GSA's high standards for quality environments for young children.

Construction Cost: \$450,000. (est.)

Completion Date: 6/1/2015

Ironbound Community Corporation Early Childhood Center

Newark, New Jersey

We designed a multilevel addition to an existing preschool in the Ironbound neighborhood of Newark, New Jersey for a vibrant community development corporation. The addition includes an expansive multipurpose environment that provides a continuity of spaces from interior to covered exterior to a roof garden to support a range of activities and afford children opportunities to connect with natural elements.

Construction Cost: \$4,800,000.

Completion Date: 9/1/2014

Acelero Learning Head Start - Expansion

Camden, New Jersey

This project involves the thorough renovation of an existing church/synagogue building to convert the environment into a preschool on two floors. A new second floor will be inserted into the existing double-height sanctuary to take full advantage of the existing building volume. New windows will be inserted consistent with the original architecture to provide ample daylight into this repurposed environment.

Construction Cost: \$2,930,000

Completion Date: 3/1/2013

Harvard Business School Campus Playgrounds

Allston, Massachusetts

Triggered by the construction of a new academic building for the Harvard Business School, campus playgrounds serving the community and the Soldiers Field Park Child Care Center required relocation and renovations. We were invited by Harvard to assist with the master planning of the playgrounds relocation and to design the renovations for each. The designs for the new playgrounds incorporate natural features and elements to extend open-ended play.

Construction Cost: \$200,000. (est)

Completion Date: Summer 2012

Gateway Pavilion and Outdoor Classroom

Manteo, NC

As part of a program to encourage children to engage with the natural world, we designed this pavilion as an outdoor classroom and gateway to the extensive parks and wildlife preserves that comprise much of North Carolina's Outer Banks. Working with the US Fish and Wildlife Service, the project will be situated at the headquarters of the Alligator River and Pea Island National Wildlife Refuges.

Construction Cost: TBD

Completion Date: TBD

Teddy Bear Club/Le Club Nounours Early Education

Lincoln, Massachusetts

We were invited by the family-owned Teddy Bear Club to design the conversion of an existing residence to be the home for their second early education program. The family-run preschool is a high-quality French-immersion program located in a semi-rural setting. The outdoor play spaces are mostly natural in character, with access to conservation trails and land.

Construction Cost: \$400,000 (est.)

Completion Date: Fall, 2013

Peabody Terrace Children's Center - Temporary Building

Cambridge, Massachusetts

As part of a major renovation project to the married student housing complex at Harvard University, we provided design services in connection with a temporary building for the Peabody Center Children's Center. The facility is comprised of a series of modular building components assembled on site in the courtyard facing the Charles River. Our design involved extensive reconfigurations to preexisting modules to accommodate the particular requirements for the child care center's program.

Construction Cost: Lease

Completion Date: 7/1/2011

D. W. ARTHUR ASSOCIATES ARCHITECTURE

Representative Child Care and Early Education Project List

Lincoln Nursery School @ DeCordova Sculpture Park and Museum

Lincoln, Massachusetts

Lincoln Nursery School invited us to continue our long engagement with them to design a new home for them on the grounds of the DeCordova Sculpture Park and Museum in Lincoln, MA. A temporary facility has been established in former studios on the campus, with future new construction deferred indefinitely.

Construction Cost:

Completion Date:

2013

Brown/Fox Point Early Education Center - Addition /Expansion

Providence, Rhode Island

Brown University and Fox Point Early Education Center invited us to conduct a feasibility study for the expansion and renovations to their existing preschool center on Brown's campus in Providence, Rhode Island. The study evaluated preferred design strategies to create an addition for infants and toddlers to a 1950's two-story lab building that had been repurposed for the preschool program. In addition to navigating the grade changes internal to the building, our study also developed strategies to optimize the rest of the site for extensive playgrounds and parking.

Construction Cost: TBD

Completion Date:

August, 2011

Laramie Children's Learning Center

Laramie, Wyoming

The County of Albany, Wyoming has invited us to assist them in master planning and designing a new child development center to accommodate approximately 200 children in Laramie. The project will involve the consolidation of two agencies that have operated separately to enhance program opportunities and efficiencies. The new entity is known as the Laramie Child Development Corporation. Our first phase included programming, site selection and conceptual design to test feasibility of the project.

Construction Cost: \$6,000,000 (est)

Completion Date:

11/1/2010

Government Center Children's Center, JFK Building

Boston, Massachusetts

As part of our IDIQ contract with the US GSA (General Services Administration), we redesigned a 15 year old child care center in the John F. Kennedy Federal Building in Boston. The center will be upgraded to comply with current guidelines, codes and best practices for early education and care.

Construction Cost: \$300,000 (est)

Completion Date:

project suspended

Government Center Children's Center,

Boston, Massachusetts

As part of our IDIQ contract with the US GSA (General Services Administration), we have begun redesign of a 15 year old child care center in the Oneil Federal Building in Boston. The center will be upgraded to comply with current guidelines, codes and best practices for early education and care.

Construction Cost: TBD

Completion Date:

project suspended

Y's Time Children's Center

St. Albans, Vermont

As part of our IDIQ contract with the US GSA (General Services Administration), we redesigned a center in the Federal Building in St. Albans, Vermont. The center has been upgraded to comply with current guidelines, codes and best practices for early education and care.

Construction Cost: TBD

Completion Date:

4/15/2013

SUNY Farmingdale Child Care Center

Farmingdale, New York

We designed a new 14,000 SF early education and child care program for The College of Technology at Farmingdale, New York. The new facility will be located on the campus near an extensive botanical gardens, which will augment the child-specific outdoor play environment. This combination of outdoor opportunities will enable the program to provide forward-thinking outdoor experiences. The "El" building form creates a two-sided courtyard protecting the playgrounds from other campus activities.

Construction Cost: \$5,608,000.

Completion Date:

December, 2013

D. W. ARTHUR ASSOCIATES ARCHITECTURE

Representative Child Care and Early Education Project List

SSA Children's Center - Playgrounds Renovations PH 1

Woodlawn, Maryland

This center, managed by the GSA, was developed in 2002 to serve employees at the SSA's headquarters campus, outside Baltimore. The GSA has invited us to design improvements to the expansive playgrounds for conformance with current standards and best practices. The improvements were based on an assessment report we prepared in Fall, 2009 of the facility, consistent with the GSA's standards for quality environments for young children.

Construction Cost: \$250,000 (est)

Completion Date: 9/1/2012

North Brunswick Phase 2

North Brunswick, New Jersey

Acelero Learning has invited us to assist them in further renovations to their facility in North Brunswick, New Jersey, to improve the quality of administrative, support and restroom spaces, along with mechanical upgrades.

Construction Cost: \$150,000.

Completion Date: Summer 2011

Lynn Economic Opportunity, Inc.

Lynn, Massachusetts

Lynn Economic Opportunity (LEO) expanded their early education and child care programs to include Early Head Start, and invited us to design a new center for these programs. The selected site included an existing church building which was expanded and renovated for six new classrooms along with substantial program enhancement, support and administrative space. The resulting design features abundant daylight, high ceilings with exposed trusses and carefully proportioned rooms that feel both intimate and open.

Construction Cost: \$1,339,000.

Completion Date: 8/1/2011

North Brunswick Playgrounds

North Brunswick, New Jersey

Acelero Learning has invited us to assist them in redesigning the playgrounds for their facility in North Brunswick, New Jersey. We have reconfigured the site, allowing for vehicular off of a quieter, less dangerous street, while locating the playgrounds closer to the classrooms.

Construction Cost: \$60,000 (est)

Completion Date: Summer 2011

Trinity Church Preschool

Boston, Massachusetts

Historic Trinity Church, located in Boston's Back Bay on Copley Place, has recently decided to develop a child care program in their Parish House. The Parish House was renovated recently and includes meeting spaces and classrooms that are currently used for Sunday School and other functions. Some of these spaces will be modified to accommodate the particular needs of a licensed child care environment. The center will use some of the existing playgrounds in the neighborhood for outdoor activities.

Construction Cost: \$100,000 est.

Completion Date: Fall, 2011

Howell Early Head Start

Howell, New Jersey

We designed selected modifications and improvements to existing elementary school rooms to create a new Early HeadStart Classroom for Acelero Learning.

Construction Cost: \$10,000.

Completion Date: Summer 2011

Early Head Start Program

Camden, New Jersey

Acelero Learning has invited us to assist them in redeveloping an existing building to accommodate their increasing Early Head Start programs serving Camden, New Jersey.

Construction Cost: TBD

Completion Date: Summer, 2010

Acelero Learning, Perth Amboy - Phase 2

Perth Amboy, New Jersey

As an expansion to our first project in Perth Amboy, completed in 2010, Acelero Learning invited us design renovations to an extension of the facility. This project involves repurposing a warehouse, converting it to high quality classrooms that meet Early Head Start and Abbott Classrooms quality standards. Seven new classrooms greatly increase the care available to the Perth Amboy community.

Construction Cost: \$800,000 (est).

Completion Date: 9/1/2011

D. W. ARTHUR ASSOCIATES ARCHITECTURE

Representative Child Care and Early Education Project List

Jamaica Kids Early Learning Center

Jamaica, New York

The GSA invited us to design improvements to the outdoor play environment in connection with this existing child care center located at the Addabbo Federal Building. Given the urban density and lack of extensive playground space, we are designing a quasi-outdoor space that is "carved out" of the building envelope at the street level. We envision incorporating some degree of plantings to provide some degree of connection to the natural world, in conjunction with large motor play space and other features typical of playgrounds.

Construction Cost: \$1,615,000 est.

Completion Date: Spring 2014

University of Massachusetts Memorial Hospital and UMass Medical

Worcester, Massachusetts

Serving the expansive medical complex of University of Massachusetts Medical School and UMass Memorial Hospital, the new 11,000 SF early education and child care center accommodates 90 children aged infant through preschool. The new facility was created through the adaptive reuse of the medical school's original laboratories. Our design features a large commons in the center with ample day lighting both from borrowed views through classrooms and large light scoops carved out of the waffle-slab roof.

Construction Cost: \$2,430,000.

Completion Date: July, 2010

SUNY Delhi Child Care Center

Delhi, New York

We designed a new 12,000 SF early education and child care program for The College of Technology at Delhi, New York. Part of the State University of New York system, this campus includes agricultural as well as technological programs. The new facility is located in the "Valley Campus", a bucolic agricultural district along the Delaware River at the edge of the Catskill Mountains. The new facility accommodates 99 children aged infant through school age, and serves the greater SUNY Delhi community.

Construction Cost: \$4,078,000.

Completion Date: 8/1/2012

Dr. James Parker

Redbank, New Jersey

Acelero Learning has invited us to assist them in increasing the capacity and quality of child care services for at-risk children in the city of Camden. This project involves the study of several existing Head Start and state subsidized "Abbott" child care facilities, with the intent of increasing capacity and environmental quality. We are also involved in evaluating potential new locations for Head Start and Abbott programs.

Construction Cost: TBD

Completion Date: 2009

Social Services Administration Children's Center

Woodlawn, Maryland

This center, managed by the GSA, was developed in 2002 to serve employees at the SSA's headquarters campus, outside Baltimore. The GSA invited us to design improvements to the 30,000 SF center for conformance with current standards and best practices. The improvements will be based on an assessment report we prepared in the Fall of 2009 of the facility, consistent with the GSA's standards for quality environments for young children.

Construction Cost: TBD

Completion Date: 10/1/2010

Oxford Street Daycare Cooperative

Cambridge, Massachusetts

As part of an ongoing program to improve and expand Harvard University's child care facilities, we were invited to design a complete reconstruction of the Oxford Street Daycare Cooperative. Through careful reorganization and the introduction of a new entrance, we optimized the available space and allowed for distinct classrooms and a central activity space. Each classroom has not only high ceilings but windows on two sides, so each has abundant natural light and connections to the landscape outdoors. The central common spaces feature a kitchen and multipurpose room for creative and active play. This space takes advantage of circulation and connects directly to the playgrounds as well.

Construction Cost: \$1,200,000.

Completion Date: January, 2011

D. W. ARTHUR ASSOCIATES ARCHITECTURE

Representative Child Care and Early Education Project List

Triumph, Inc. Headstart

Taunton, Massachusetts

Triumph Inc. invited us to develop a feasibility study and master plan for the expansion and reconfiguration of their programs in southeastern Massachusetts. The plan anticipates a new building adjacent to their current headquarters, allowing for the consolidation of various programs. The two buildings will be connected with a bridge element to integrate the programs while providing each family grouping a more intimate sense of community.

Construction Cost: \$4,500,000 (est).

Completion Date: (pending funds)

"The Ranch" at Rafter J

Jackson Hole, Wyoming

"The Ranch" is a 12,000 SF building that comprises the first of a multi-phase project to increase quality and capacity of early education programs for the county of Teton, Wyoming. We designed this first building to accommodate a 20,000 SF, two story addition. The ultimate project will feature playgrounds both at grade and on the first story roof, taking advantage of the exceptional natural surroundings. The design integrates a variety of programs, including special needs and Head Start, with highly flexible but age-specific room clusters. The exterior recalls regional vernacular ranch buildings.

Construction Cost: \$4,800,000 (Phase 1)

Completion Date: 12/15/2010

Harvard Yard Child Care Center

Cambridge, Massachusetts

As part of an ongoing program to improve and expand Harvard University's child care facilities, we were invited to design a complete reconstruction of the Harvard Yard Child Care Center. The program has been run as a cooperative, and parents as well as staff were involved with the design process. The center benefits from a large and protected playyard directly adjacent to the building, and the reconstruction of the facility enhances direct connections to this exterior space. Additionally, the new design includes a generous multi-purpose active play room, that can be opened up to other public spaces in the center to accommodate a range of activities, including family gatherings. LEED Gold Certified.

Construction Cost: \$1,800,000.

Completion Date: July, 2010

Fed Kids Children's Center

New York, New York

This GSA child care center located in the Federal Building in Manhattan has grown over the past 15 years, and is in need of modernization to comply with current standards. We have assisted the GSA with designs for selected improvements and expansions, including a new multi-purpose room and additional classroom spaces.

Construction Cost: \$300,000 (est)

Completion Date: 6/15/2009

ABCD Playground

Boston, Massachusetts

We have recently been invited by Action for Boston Community Development, Inc. to assist with the redesign of the playground that serves their child care center in Dorchester. The existing playground is antiquated and ABCD wishes to incorporate a more nature-inspired play environment. The design includes site specific climbing equipment along with planting beds, sand and water play, and a range of smaller scaled environments that incorporate trees and other vegetation.

Construction Cost: \$TBD

Completion Date: Fall, 2010

Byrne Green Children's Center - General Services Administration

Philadelphia, Pennsylvania

The GSA invited us to provide design services for an expansion and renovation project for this center in Philadelphia. The center was expanded to provide additional classroom space along with a new multipurpose/active play room and kitchen.

Construction Cost: \$500,000

Completion Date: 6/10/2010

D. W. ARTHUR ASSOCIATES ARCHITECTURE

Representative Child Care and Early Education Project List

Agassiz Preschool

Somerville, Massachusetts

Agassiz Preschool occupied the lower level of an historic church in Cambridge for 40 years prior to relocating to Somerville. DWAAA was invited to assist them with the design of a new home in an existing 3 story residential building. Significant renovations and additions transformed the residential property into an inviting new set of classrooms. The design carefully integrates new components (such as an elevator, stair, kitchen, etc.) while maintaining the appealing historic and residential characteristics of the building.

Construction Cost: \$450,000

Completion Date: Fall, 2010

General Services Administration - Child Care Program

Mid-Atlantic, Northeast and

The GSA manages most federal properties in the US, including 110 child care centers. We were selected to assist them with a variety of expansion, renovation, new construction and related projects for their child care program. The geographic range of the projects we will be designing include the Mid-Atlantic, Northeast and Caribbean regions of the country, and our services are expected to continue for five years.

Construction Cost: varies

Completion Date: 1/1/2016

PEEP exhibit and CDTK prep

Boston, Massachusetts

Working in collaboration with the Boston Children's Museum and their exhibit designer, DWAAA assisted with the overall environmental design for this new exhibit. The exhibit is based on the animated PBS show that engages children in exploration of the natural world. As the architect-of-record, we assisted with the coordination of the numerous systems and the exhibit components.

Construction Cost: \$200,000

Completion Date: July, 2009

Westfield Child Center: Nature-based playground

Brockton, Massachusetts

Westfield Child Center invited us to design a "nature-based playground" to augment their conventional playground serving preschool and school-age children. The developed scheme includes planting beds, water play, a 'tree fort', amphitheatre and other elements that are intended to increase the children's interactions with the natural world and provide less conventional opportunities for exploration and discovery in the outdoors.

Construction Cost: \$200,000

Completion Date: 7/15/2011

Jewish Community Centers of Greater Boston

Sharon, Massachusetts

The Jewish Community Centers of Greater Boston invited us to design a new facility for a preexisting preschool program at a new location in Sharon, Mass. The new center occupies an existing wing of the Temple Sinai, which has direct access to an adjacent outdoor playspace. The site grading slopes down to the east, and new windows were installed along the eastern exterior wall. We organized the layout and arranged the classrooms to maximize day-lighting through these new exterior windows, as well as to afford views to a nature-oriented playground.

Construction Cost: \$800,000

Completion Date: July, 2009

Brockton Day Nursery

Brockton, Massachusetts

Brockton Day Nursery has expanded their facility in increments over the past several decades, and now wish to increase capacity by creative reconfiguration of some of their existing spaces. We have been invited to work with them to assess and design possible strategies for increasing capacity while also improving the qualities of their environments.

Construction Cost: \$200,000 est.

Completion Date: project suspended

Acelero Learning, 2nd Street, Perth Amboy Phase 1

Perth Amboy, New Jersey

Acelero Learning invited us to assist them in the thorough renovations and improvements to an existing childcare facility. The center, about 12,000 SF, now includes about six classrooms that meet the standards of "Abbott Classrooms", a distinct quality threshold in New Jersey.

Construction Cost: \$350,000 (est)

Completion Date: 7/1/2010

D. W. ARTHUR ASSOCIATES ARCHITECTURE

Representative Child Care and Early Education Project List

Acelero Learning, Livingston Avenue Phase 1

North Brunswick, New Jersey

We assisted Acelero Learning in transforming this existing 6000 SF child care center to a much improved environment for early learning. The layout of the center was completely reworked to provide more appropriately proportioned classrooms and to meet State of New Jersey "Abbott" requirements.

Construction Cost: \$200,000 (est.)

Completion Date: 6/6/2010

Ann Pappajohn Vassiliou Child Study Center

Chestnut Hill, Massachusetts

The Ann Pappajohn Vassiliou Child Study Center invited us to assist them with design improvements to the outdoor play areas that support their child care center. The facility occupies a part of the beautifully landscaped campus of Pine Manor College, and has the opportunity to integrate a more nature-based approach to the outdoor experience for young children.

Construction Cost: \$175,000 (est.)

Completion Date: June, 2009

Triumph, Inc. Headstart

Taunton, Massachusetts

Triumph Inc. invited us to develop a feasibility study and master plan for the expansion and reconfiguration of their programs in southeastern Massachusetts. The plan anticipates a new building adjacent to their current headquarters, allowing for the consolidation of various programs. The two buildings will be connected with a bridge element to integrate the programs while providing each family grouping a more intimate sense of community.

Construction Cost: \$4,500,000 (est.)

Completion Date: Phase 1: Summer, 2010

Lincoln Nursery School - Expansion

Lincoln, Massachusetts

Lincoln Nursery School has invited us to continue our long engagement with them to design further improvements of their early education environments. This project involves consolidating the classrooms on the ground floor by expanding the building footprint and reconfiguring the interior spaces. The classrooms will have an improved connection to the exceptional playground and surrounding woods and meadows, encouraging a greater interaction with the natural world.

Construction Cost: \$800,000 (est.)

Completion Date: project suspended

Teton County CLC Phase IV: "The Elk Refuge" at St. John's Medical

Jackson Hole, Wyoming

As one phase of our master plan for the County of Jackson, Wyoming, a new child development center has been designed for the campus of St. John's Medical Center in the town of Jackson. The available site is constricted by other buildings which has led to a two-storey design with outdoor playgrounds accessible directly from classrooms on both levels. The campus sits at the southern end a very large territory where elk come to feed in the winter, hence the name "Elk Refuge".

Construction Cost: \$4,500,000 (Phase 2)

Completion Date: TBD

Child Development Center Region 2

Buffalo, Wyoming

The CDC of Wyoming's Region 2 serves children in Buffalo and Sheridan, has sought to consolidate and expand their Buffalo operations in a new facility. We have assisted them with site selection and analysis, programming and design for the new center which will include child care as well as a range of programs for children with special needs. The proposed building site is a corner of a public park, adjacent to a mountain stream.

Construction Cost: \$600,000 (est.)

Completion Date: 2010

Teton County Children's Learning Centers - Master Plan

Jackson Hole, Wyoming

The County of Teton, Wyoming invited us to assist them in master planning and designing new child development centers on three or more sites to accommodate a total of 500 children. The projects will be phased and serve the varied demographic surrounding Jackson Hole. The locations include both undeveloped sites and existing occupied sites to be redeveloped in town. The phasing has been planned to allow a gradual increase in overall capacity, while existing facilities are replaced.

Construction Cost: \$5,900,000 (Phase 1)

Completion Date: Phase 1: Fall, 2010

D. W. ARTHUR ASSOCIATES ARCHITECTURE

Representative Child Care and Early Education Project List

Corning Children's Center

Corning, New York

This new 24,000 square foot child development facility is designed as a series of "family houses" organized around two central courtyards. As each "house" contains one of each age group from infants through school age, this design exemplifies the current goal for continuity of care. The center also features destination places such as an art studio, library and specialized playyards which provide many opportunities for field trips without leaving the center. The design also allows for phased expansion, with an ultimate size projected at 40,000 square feet.

Construction Cost: \$7,000,000.

Completion Date: July, 2009

Montessori Children's School

Jacksonville, North Carolina

The Children's Montessori School of Jacksonville, NC provides a progressive learning environment for children from infancy through sixth grade, with a strong commitment to learning with nature. The first phase expansion included an indoor-outdoor laboratory with rain-water catchment, operable walls, transformable spaces, and other elements to encourage experimentation with the natural world. We also designed a new 5,000 square foot building to accommodate upper elementary students through sixth grade. The building design integrates with the outdoor play environment, which was led by the Natural Learning Initiative.

Construction Cost: \$950,000 (est)

Completion Date: 6/14/2010

Massachusetts General Hospital Children's Center

Boston, MA

MGH has invited us to assist them in the evaluation and master planning of expansion space in various locations around their Boston campus. Part of our evaluation includes careful study of available interior and exterior spaces that can provide optimal environments for childhood amidst the urban complexities of Boston.

Construction Cost: TBD

Completion Date: 2008 est.

Harvard Business School - Soldier's Field Park Children's Center

Allston, Massachusetts

As part of Harvard's ongoing program to improve and expand child care facilities, we designed an expansion to the Soldier's Field Park center on the HBS campus. In addition to expanded infant/toddler capacity, we created a new multi-purpose destination intended to both expand programming enrichment opportunities and to provide a common community focus for the disparate parts of the center. This space was carefully designed to incorporate innovative fold-away tables, window seats, a "studio" area with child height sink/counters, and other elements which enable transformations in use.

Construction Cost: \$750,000

Completion Date: 8/15/2008

"Countdown to Kindergarten" Exhibit at Boston Children's Museum

Boston, Massachusetts

For a number of years, Boston Children's Museum has sponsored programs to assist families with preschoolers prepare for the transitions to Kindergarten. The museum invited us to design a new exhibit for their recently renovated museum which encapsulates the goals of that program, "Countdown to Kindergarten". The exhibit has been a welcome and distinctive addition to the museum, and complements city-wide programs that encourage early readiness for the children and their families as they prepare for this important milestone in their lifetime of learning.

Construction Cost: \$500,000 est.

Completion Date: Summer, 2010

"Greenstart" early childhood prototype (Chameleon Pavilion)

In support of our early education design work, our office maintains and explores research and design initiatives focussed on encouraging children's engagement with the natural world. We recently developed a prototype for an indoor-outdoor classroom that can transform throughout the year and support a wide range of activities that include connections with the natural world. We received an honorable mention for the project (and a special award for best Sketchup renderings) in an Architecture for Humanity competition for this design, and have had it implemented at the Jacksonville Children's Montessori School.

Construction Cost: N/A

Completion Date: competition 2009

D. W. ARTHUR ASSOCIATES ARCHITECTURE

Representative Child Care and Early Education Project List

"Design for Children IN Nature"

Shepherdstown, West Virginia

Natural Learning Initiative sponsored a design institute focussed on encouraging children's engagement with the natural world. The institute, held at the US Fish and Wildlife Training Center, included presentations, workshops and field trips with children into the surrounding countryside and the Potomac River. Dogan Arthur presented architectural design strategies to encourage children's engagement with the natural world.

Construction Cost: N/A

Completion Date: August, 2007

Monument Square Early Childhood Center

North Adams, Massachusetts

Child Care of the Berkshires invited us to develop a master plan and series of discrete projects to improve the environment in and around the 1922 school house that they have been using for child care programs for nearly 40 years. While the building offers the high quality space and daylight afforded by large windows, high ceilings and other architectural characteristics, the spaces will be modified to more closely support early childhood programs.

Construction Cost: varies by phase

Completion Date: Fall, 2007

Acelero Learning - Dr. James Parker Boulevard

Redbank, New Jersey

Acelero Learning has improved and expanded this Head Start program. The design included renovation of an existing YMCA facility for four new Head Start classrooms. We provided regulatory review and schematic design services, and a local architect completed the documents for construction.

Construction Cost: \$600,000. (est)

Completion Date: 2008

Teradyne Children's Center

North Reading, Massachusetts

For a new center located at Teradyne Corporation's headquarters, we have designed a new facility within an existing 3-story structure. The design features a large central active play space surrounded by homebases. Adjacent outdoor space has been developed to provide protected and dedicated playgrounds for the children.

Construction Cost: \$800,000.

Completion Date: June, 2007

Harvard University - Peabody Terrace Children's Center

Cambridge, Massachusetts

Harvard University invited us to design an expansion and renovation to an existing children's center located within the architecturally significant Peabody Terrace complex. This complex, designed by Jose Luis Sert, contains graduate student housing and amenities. The 8,000 square foot center accommodates about 80 children, and occupies three distinct sections of the complex, organized around a large public courtyard. We designed an art studio/atelier (inspired by the Reggio Emilia programs) which is shared by all groups and serves as a destination and focal point to reinforce a sense of community for all families.

Construction Cost: \$1,300,000.

Completion Date: Fall, 2007

Acelero Learning - Christus Evangelical

Camden, New Jersey

We assisted Acelero Learning with the design of renovations to an existing Nursery School for new Head Start and Abbott classrooms serving the community of Camden. The project also included our design for new playgrounds.

Construction Cost: \$70,000. (est)

Completion Date: 2008

Westbay Children's Center

Warwick, Rhode Island

For its first major expansion in a 40 year history, we are collaborating with the Westbay Children's Center in the design of a new center to accommodate up to 130 children. We are currently exploring options for reuse of parts of their existing facilities along with the construction of new spaces on their existing site.

Construction Cost: \$1,200,000. est.

Completion Date: pending

Acelero Learning - Freehold Baptist Church

Freehold, New Jersey

Acelero Learning has created a new Head Start program serving the Freehold, New Jersey community. A multi-stage renovation of an existing nursery school, attached to an historic church includes significant upgrades to the 1950's addition to expand capacity and dramatically improve the environment for the families and neighborhood.

Construction Cost: \$250,000. (est)

Completion Date: June, 2007

D. W. ARTHUR ASSOCIATES ARCHITECTURE

Representative Child Care and Early Education Project List

Acelero Learning - Asbury Park, New Jersey - BJ Griffin Center

Asbury Park, New Jersey

Acelero Learning has created a new Head Start program serving the Asbury Park community. We assisted with the conversion of an old school to support the programs. Completed work includes a new entry, accessibility improvements, and interior upgrades. Future plans call for a new addition and playgrounds to expand capacity and dramatically improve the environment for the families and neighborhood.

Construction Cost: \$250,000. to date

Completion Date: April, 2008 (phase 2)

Citigroup Family Center

Jacksonville, Florida

As part of a recently developed campus for Citicards, Citigroup has constructed a new 42,000 square foot complex to provide child care for their community. Our design concept breaks down the overall facility into discrete family groupings which are in turn wrapped around a series of outdoor courtyards that afford a variety of playground environments. This configuration provides protection from unwelcome wildlife, and recalls Spanish influenced courtyard architecture of nearby St. Augustine.

Construction Cost: \$13,000,000.

Completion Date: July, 2007

Camden Early Head Start

Camden, New Jersey

Acelero Learning has worked with other community service groups to create a new Early Head Start program serving 48 infants and toddlers as part of a complete renovation of an existing YMCA in Camden. We were invited to provide planning, design and consultation related to the child care component of the project, and to assist the local architects with the implementation. Our scope included design of interior spaces and the outdoor play yard.

Construction Cost: \$500,000. (est)

Completion Date: May, 2007

Bright Horizons Family Center - The Prudential Center

Boston, Massachusetts

The ongoing redevelopment at The Prudential Center provided an opportunity to redesign and renew this children's center which was originally built to our design in 1990. The new design integrates state of the art standards for high quality child development. The final configuration features an adjacent plaza-level playground that is immediately accessible to children in the center, but protected from the public.

Construction Cost: \$550,000.

Completion Date: January, 2006

Children's Evaluation Center

Newton, Massachusetts

This organization offers diagnostic and therapeutic services to children with behavioral and developmental challenges. In addition to traditional offices (including physicians' offices), the new center will include active play and other areas intended to engage and comfort children and provide support for the therapeutic activities.

Construction Cost: \$300,000 (est)

Completion Date: 2008 (est)

Catholic Charities North Child Care and Social Services

Lynn, Massachusetts

Proposed for 200 children and a range of social service groups, this new building will be part of a significant community redevelopment in Lynn. Catholic Charities has two other similar projects located in other neighborhoods in Boston, and expect that the new facility in Lynn will enable them to consolidate and improve upon their already successful base of services.

Construction Cost: \$6,000,000 (est)

Completion Date: 1/1/2006

Williams College - New Children's Center

Williamstown, Massachusetts

Williams College invited us to select a site and design the new home for their Children's Center. We worked closely with the college's faculty and staff to create an overall design that focuses on indoor and outdoor places for children and the connections between them. The result is an environment that is distinguished by direct access between classrooms and the beautiful natural surroundings, combined with a distinct sense of privacy and close proximity to the campus center.

Construction Cost: \$4,300,000.

Completion Date: 9/1/2007

D. W. ARTHUR ASSOCIATES ARCHITECTURE

Representative Child Care and Early Education Project List

Horizons for Homeless Children - "White Rock"

Roxbury, Massachusetts

Horizons for Homeless Children is an organization that provides child care to homeless families in Boston, while parents are engaged in education and employment programs. We have been involved with the organization since we designed their first children's center in 1993. This facility includes their third children's center (for 50 children) as well as the new home for the organization's leadership and administration. The design, involving the conversion of an old soda bottling plant, carefully integrated daylighting and views from new skylights and windows into the new children's areas.

Construction Cost: \$620,000.

Completion Date: 9/1/2005

Middlebrook Children's Center

Trumbull, CT

Connecticut CIP LISC has retained us to assist them in the incorporation of nature-based elements into playgrounds at various centers they operate in Rhode Island. Each site has unique characteristics and we worked with them to make best use of the natural features that exist as well as to introduce new concepts.

Construction Cost: unknown

Completion Date: Fall 2005

Brigham & Women's Hospital Children's Center

Brookline, Massachusetts

Partners Healthcare/Brigham & Women's Hospital invited us to create a backup child care center within one of their medical complexes for use by doctors, staff and patient family use. This center provides emergency care to enable the medical personnel to get to work when their usual child care is not available. We completed a similar facility for Massachusetts General Hospital several years ago which has been very successful, leading to a comparable effort at the Brigham.

Construction Cost: \$398,760

Completion Date: Fall, 2005

Child Care Center Design Guide

National distribution

Working closely with LISC, a New York based organization committed to promoting the generation of high quality child care programs, we developed a comprehensive guide to assist with the design of child care environments. Drawing on our broad experience in the design of environments for early childhood development, we focused on providing clear explanations of the many design issues in language that will be accessible to caregivers and educational professionals and also useful for architects and designers. Dogan Arthur was lead author, and the firm produced all illustrations for this as well as other guides in the series.

Construction Cost: N/A

Completion Date: June, 2006

Child Care Connections - Playgrounds for Natural Learning

Lincoln, Rhode Island

Child Care Connections has retained us to assist them in the incorporation of nature-based elements into playgrounds at various centers they operate in Rhode Island. Each site has unique characteristics and we are working with them to make best use of the natural features that exist as well as to introduce new concepts.

Construction Cost: \$300,000. (est)

Completion Date: Fall, 2004

Buds and Blossoms

Boston, Massachusetts

As part of a new 7-storey multipurpose building constructed in Boston's Chinatown, we developed a design for the Asian American Civic Association's center that serves the greater Boston community. The center serves about 60 children aged infant through preschool, and features a Mandarin-language immersion program, appealing to a broad range of families. The facility also supports local child care providers through showcasing exemplary practices, providing workshops, etc.

Construction Cost: \$400,000. (est.)

Completion Date: February, 2010

Child Care Playground Design Illustrations/Renderings

National

Rhode Island LISC is assisting numerous organizations with design and development of new children's centers throughout the state. We have worked closely with them to develop illustrations that support their efforts to communicate design ideas that can inform high-quality design. These illustrations include 3D renderings and diagrammatic plans to help convey the many important concepts for architectural design that are critical to quality environments for young children's development.

Construction Cost: varies

Completion Date: 2004

D. W. ARTHUR ASSOCIATES ARCHITECTURE

Representative Child Care and Early Education Project List

Child Care Designs Illustrations/Renderings

National

In support of Rhode Island LISC's efforts to improve the quality of care among family child care providers, we developed a series of illustrations for utilization in a variety of training venues. These sketches depict creative and affordable ideas for environments conducive to quality care in typical home care settings. The illustrations are integrated with other media to produce training materials to help assist caregivers.

Construction Cost:

Completion Date:

2004

Rhode Island LISC Playground Workshops

Providence, Rhode Island

Rhode Island LISC invited us to develop and lead a series of workshops focused on the design and development of improved outdoor environments for young children. These workshops included a slide presentation given by firm members, followed by design charrettes, in which participants were able to develop ways of articulating, expressing, and communicating their aspirations for outdoor spaces for children.

Construction Cost: N/A

Completion Date:

May, 2004

Horizons for Homeless Children

Dorchester, Massachusetts

As part of our on-going support of Horizons for Homeless Children, we generated designs, and organized and participated in the implementation of improvements to the playground for this 12 year old center that serves homeless families. The playground improvements include incorporating gardens, planters, trellises and other elements to add green and colorful foliage, shade and opportunities for children to learn from natural elements.

Construction Cost: pro-bono services

Completion Date:

5/1/2004

Beacon Hill Nursery School

Boston, Massachusetts

In 2003, Beacon Hill Nursery School, a 50 year old school serving downtown Boston neighborhoods, redefined its mission to add programs to serve younger children. The standard pre-school and kindergarten enrollment was augmented with age 2.0 programs, resulting in a reconfiguration of the entire 4-storey historic building. Significant renovations to the building shell, systems, and interior architecture have resulted in a fully accessible and updated building that preserves the historical integrity of the original structure while greatly improving the programs it houses.

Construction Cost: \$2,800,000.

Completion Date:

October, 2005

RI LISC - Beautiful Beginnings & Totally Kids

Providence, Rhode Island

Two existing child care centers were selected to by RI LISC for us to develop prototype designs. We developed 3 options for each site, distinguished by increasing levels of construction and commensurate cost. At Totally Kids, the designs work from an existing playground, whereas at Beautiful Beginnings, a new center, the designs all began with an unimproved site. Each facility is currently working towards implementation of the designs.

Construction Cost: varies

Completion Date:

Fall, 2004

Child Care Design Guide illustrations

Boston, Massachusetts

We generated a number of line sketches to assist Carl Sussman Associates with a child care design guide produced for use by various child care support agencies. The images diagrammatically illustrate key concepts in child care interior layouts, including adjacencies, relationships between spaces and services, and some spatial considerations.

Construction Cost: varies

Completion Date:

2003

The Rivers School - Master Plan

Weston, Massachusetts

Working closely with trustees, administration and faculty of this private day school, we created a master plan for future improvements to the campus. The Rivers organization includes a renowned music school and two day camps as well as full middle and upper schools. As part of this plan we developed a new child care center design that transforms into a lodge for summer camp programs.

Construction Cost: varies by project

Completion Date:

MP: Fall, 2003

D. W. ARTHUR ASSOCIATES ARCHITECTURE

Representative Child Care and Early Education Project List

Mt. Olive Playground

Hartford, Connecticut

In support of Connecticut Investment Partnership's efforts to improve the quality of outdoor play in existing child care playgrounds, we provided conceptual design ideas for future improvements. These concepts incorporate recent developments in the early education field that promote reintegration of natural elements to broaden the opportunities for children to learn from the world around them.

Construction Cost: \$50,000 (est)

Completion Date: 2003

Williams College Children's Center - Site Selection

Williamstown, Massachusetts

As an outgrowth of our earlier feasibility study that recommended a new facility, Williams initiated a site selection process to determine an ideal location for the college's new children's center. We were invited to work closely with the building committee to evaluate site options and to develop conceptual designs for the new project. In-depth analysis of development options and various analytical criteria were employed to assess the comparative merits of four sites, culminating a set of recommendations and rankings of the sites.

Construction Cost: varied by site

Completion Date: Fall, 2003

Meriden Head Start Renovations

Meriden, Connecticut

Working with Easter Seals of Connecticut and Acelero Learning, we designed significant renovations for a 100 year old school house to better support early childhood programs sponsored by Head Start. The existing classrooms and public spaces have been updated and improved to create a welcoming and supportive environment for children, families and staff.

Construction Cost: \$240,000.

Completion Date: March, 2003

Prudential Tower Child Care Center

Boston, Massachusetts

In support of a major redevelopment of the Prudential Center in Boston, the existing Bright Horizons Children's Center at the Prudential was relocated for one year to the 2nd floor of the Prudential tower. The temporary occupancy took advantage of existing wood floors and the open loggia that wraps the floor at this location for additional exterior playspace.

Construction Cost: \$600,000. (est.)

Completion Date: December, 2004

"Making the Most of Your Outdoor Play Space" Playgrounds Workshops

Connecticut (various cities)

We conducted a series of one-day workshops, entitled "Making the most of your outdoor playspace" with presentations and hands-on design exercises. These workshops were intended to help child care providers develop the tools to communicate and ultimately realize their aspirations for high quality environments for their programs. Much of the workshop's emphasis was on cost-effective alternatives to manufactured components, and the introduction of natural elements into the play spaces.

Construction Cost: N/A

Completion Date: Spring, 2004

Lincoln Nursery School - Renovations

Lincoln, Massachusetts

This project updates the exterior playyards for a 50-year-old cooperative nursery school, the interior spaces of which we renovated in 2000. The design updates the exterior environment to be supportive of contemporary approaches to early childhood development and to better integrate with the rural town-center character in which it is located. The design integrates elements constructed by parent volunteers with the existing topography and mature trees.

Construction Cost: \$90,000.

Completion Date: June, 2001

Corning Children's Center Temporary Facilities

Corning, New York

As part of Corning's long-range plan, we assisted with the design of temporary facilities to serve as an annex to the existing Corning Children's Center. This short-term solution accommodated the growing demand for child care while the new Corning Children's Center is developed on a new site.

Construction Cost: \$700,000. (est.)

Completion Date: April, 2001

D. W. ARTHUR ASSOCIATES ARCHITECTURE

Representative Child Care and Early Education Project List

Corning Parent Resource Center

Corning, New York

As part of an array of public outreach programs, Corning supports a Parent Resource Center which provides various services for parents with young children, with a specific orientation towards "best practices". The center will be relocated to the newly renovated library and will share its resources. The design will encourage parents and children to feel engaged and to explore the resources available in the center and in the children's and adults' library within the same building.

Construction Cost: \$204,000.

Completion Date: May, 2001

Lincoln Nursery School - Playground Renovations

Lincoln, Massachusetts

This project updates the exterior playyards for a 50-year-old cooperative nursery school, the interior spaces of which we renovated in 2000. The design updates the exterior environment to be supportive of contemporary approaches to early childhood development and to better integrate with the rural town-center character in which it is located. The design integrates elements constructed by parent volunteers with the existing topography and mature trees.

Construction Cost: \$90,000.

Completion Date: 6/30/2001

Corning Children's Center Renovation and Expansion

Corning, New York

As part of Corning's growth plan, we designed renovations and an expansion to the Corning Children's Center to better support contemporary programs for early childhood education, while increasing the total capacity to approximately 190 children. The expansion's design continues and elaborates on the original building's playful character, which includes strong sculptural roof-forms. The master plan has since evolved to relocate the child care to a new site, and we have designed the new replacement center.

Construction Cost: \$2,200,000. est

Completion Date: December, 2000

Bright Horizons Family Center at The Southfield Center

South Plainfield, New Jersey

This new center occupies about 10,000 square feet in an office park with adjacent playyards. The center incorporates many of the features of a model "family center for the 21st century". The center was designed to accommodate 142 children, aged infant through preschool.

Construction Cost: \$700,000. (est.)

Completion Date: July, 2001

Building Stronger Centers Training Institute - CCCIF

Boston, Massachusetts

The Child Care Capital Investment Fund of Boston has since 2002 been conducting week-long training institutes focused on improving the overall quality of child care environments state-wide. We have participated both in design clinic workshops and with presentations to participants. Our presentations for this institute have included explorations of indoor-outdoor connections and the evolution of playgrounds. The design clinics enable us to provide hands-on assistance and encouragement with specific design challenges each participant brings to the institute.

Construction Cost: N/A

Completion Date: on-going

Bright Horizons Family Center at Mountain Lakes

Mt. Lakes, New Jersey

This new center occupies about 10,000 square feet in an office park housing Newsweek and other corporate offices. The center incorporates many of the features of a model family center, with adjacent playyards designed into a wooded and bermed site. Interior windows provide multiple, layered views to the exterior and help the entire environment feel integrated. The center is designed to accommodate 142 children.

Construction Cost: \$900,000.

Completion Date: October, 2000

Capital Health System - Children's Center- Feasibility Study

Trenton, New Jersey

Capital Health System is planning to develop a child development center on its Trenton campus to serve the Hospital staff. We studied the feasibility of locating the center on the lower two floors of an early twentieth century nurses' home. The playground is intended to occupy a landscaped area in front of the original Beaux Arts facade, and immediately adjacent to the center's rooms.

Construction Cost: TBD

Completion Date: project suspended

D. W. ARTHUR ASSOCIATES ARCHITECTURE

Representative Child Care and Early Education Project List

"Erwin Child & Family Center" Expansion

Erwin, New York

As part of Corning's growth plan, we designed an expansion to the Erwin Valley center (originally designed by us and completed in 1998) to accommodate 60 additional children. The expansion essentially adds one family grouping in a wing that reinforces the original design intentions.

Construction Cost: \$1,500,000.

Completion Date: 10/1/2000

"Early Discoveries" - Abbott Laboratories Child Development Center

North Chicago, Illinois

This new 47,000 square foot complex accommodates 425 children, infants through school age, from families of the greater Abbott Laboratories community. The scale of the complex is broken down into four distinct wings that step with the gentle topography. Elements of the existing landscape, including a pond with bridge, apple orchard and stands of mature hardwoods enhance the more conventional child learning spaces.

Construction Cost: Witheld

Completion Date: May, 2001

Corning Child Care Master Growth Plan

Corning, New York

In 1999, Corning Enterprises asked us to assist in their efforts to plan for the growing demand for early childhood education that has accelerated due to the rapidly growing population in Corning. The growth plan investigates options for expanding existing centers and phasing construction to keep pace with demand but limit impact to operating programs.

Construction Cost: by project

Completion Date: 3/1/2002

"Upper Gwynned Child Development Center" - Merck & Co.

Upper Gwynned, Pennsylvania

This new 20,000 square foot child care facility accommodates 240 children. Our second center for Merck & Co., it serves the new Merck campus in Upper Gwynned as well as the adjacent West Point site. This project incorporates refinements to the prototype center we designed for Merck which was constructed nearby on the West Point site.

Construction Cost: \$3,300,000.

Completion Date: September, 2000

Edward W. Brooke Courthouse Children's Center

Boston, Massachusetts

Designed for children of families who have business in the courts, this center occupies a corner of the first floor of the recently completed New Chardon Street Courthouse in Boston. We were retained to make modifications to the original build-out to better accommodate the programs run by Workplace Connections and The Massachusetts Trial Court Child Care Project.

Construction Cost: \$110,000.

Completion Date: September, 1999

Lincoln Nursery School - Washroom Renovations

Lincoln, Massachusetts

This project incorporated significant improvements in this 50 year old cooperative nursery school housed in a 1950's addition to a 19th century Richardsonian parish house. The design updates the environment to be supportive of contemporary approaches to early childhood development.

Construction Cost: \$50,000

Completion Date: August, 2000

Groton School Children's Center

Groton, Massachusetts

Designed to blend with the historical campus and town of Groton, the composition of this newly constructed center resembles a connected New England farmhouse. A central volume houses the entrance, administration and infants, while connected "ells" and a timber-framed "barn" house the toddler and pre-school rooms. The 4,000 square foot center serves families associated with Groton School and the town of Groton.

Construction Cost: \$1,000,000.

Completion Date: 4/15/2000

D. W. ARTHUR ASSOCIATES ARCHITECTURE

Representative Child Care and Early Education Project List

Bright Horizons "Arsenal on the Charles" Children's Center

Watertown, Massachusetts

This project involved the renovation of an historic building on the recently decommissioned Watertown Arsenal campus into a new state-of-the-art "family center for the 21st century". The center serves tenants in the redeveloped mixed-use complex, and is next door to Bright Horizons Family Solutions world headquarters. The playground benefits from the adjacent grounds of the former Commander's residence which have been restored to F. L. Olmsted's original design.

Construction Cost: \$780,000.

Completion Date: October, 2000

Gateway Village Child Development Center

Charlotte, North Carolina

Marking an unprecedented commitment to child care, Bank of America has envisioned a 250 child capacity center as part of its masterplan for three new urban blocks in downtown Charlotte. This new center is being planned as part of an entirely new mixed-use complex including office, residential, retail and parking. Planning for childcare at the urban design level will enable the center to have optimal exterior as well as interior space in a safe and convenient location.

Construction Cost: \$5,000,000 est.

Completion Date: 3/1/1999

"The Eagle's Nest" - First USA Back-up Child Care Center

Wilmington, Delaware

We designed this back-up child care center to take advantage of a tall space in First USA's Wilmington offices. The climbing/play tower occupies a double-height space and is accessible from both the toddler and preschool/school-age sides of the center. Curved soffits delineate the change in ceiling heights, allowing abundant daylight into the deeper spaces while maintaining child-friendly proportions.

Construction Cost: \$400,000.

Completion Date: June, 1999

Mattel Child Development Center

El Segundo, California

This project involves the expansion and relocation of the Mattel Child Development Center as part of the development of a new Mattel corporate campus. The first phase will accommodate 80 children and the second phase is planned to double the capacity. A large adjacent open space will be developed into a state-of-the-art outdoor playyard.

Construction Cost: \$980,000, est.

Completion Date: project suspended

"Kids Next Door" a Warner-Lambert Family Center

Morris Plains, New Jersey

Located on a prominent wooded hilltop on Warner-Lambert's world headquarters campus, the design of this center takes advantage of the topographical features of its site. The classrooms and common spaces step gently up around a centralizing outdoor courtyard, and a play loft mezzanine overlooks a projects/commons and the courtyard. The 17,000 square foot center was designed to accommodate 180 children. The campus is now owned by Johnson & Johnson.

Construction Cost: \$4,100,000.

Completion Date: November, 1999

"Erwin Child & Family Center" - Corning, Inc.

Erwin, New York

This 12,000 square foot child care facility is the third center serving the Corning community. In this new building, homebases for 120 children are organized in several scales of community. "Family groupings" include the full complement of age groups arranged around a central living room. These groupings are in turn arranged around a large "commons" area to create a sense of community for the entire center. The common spaces have high ceilings, clerestory windows, and open onto a landscaped courtyard.

Construction Cost: \$2,000,000.

Completion Date: 9/1/1998

Christ Church Child Care facility renovations

Corning, New York

We were retained by Corning to assist in their efforts to upgrade their two older child care programs with the goal of maintaining an equivalent standard of quality at each of their three centers, and to meet current standards. These facilities include a pre-existing church building and a free-standing children's center built in 1994.

Construction Cost: \$150,000. (est.)

Completion Date: January, 2000

D. W. ARTHUR ASSOCIATES ARCHITECTURE

Representative Child Care and Early Education Project List

Bayer Child Care Center

Storrs, Connecticut

For this new facility serving families employed by Bayer, we provided design consulting services for the interior finishes and materials. One of the leaders of the sponsorship team has an interest in the Steiner Schools' predilection for natural materials, which resulted in the use of cork-based linoleum and other less common materials.

Construction Cost: \$3,500,000 est.

Completion Date: Fall, 1998

Crosby Corporate Child Care Center

Bedford, Massachusetts

This project entailed the renovation and expansion of a decommissioned one story 8,000 square foot research and testing building. Responding to the existing topography, a playfully detailed retaining wall was introduced to reinforce the continuity between the new activity room and the exterior play spaces. The center serves 124 children.

Construction Cost: \$850,000.

Completion Date: September, 1998

Landmark Child Care Center

Boston, Massachusetts

This child care center is part of the Master Redevelopment plan for the historic Sears building, located within the heart of Olmstead's "Emerald Necklace." The 10,000 square foot center is on the fourth floor of the building, with an adjacent roof-top playground, and is designed for 100+ children.

Construction Cost: \$550,000.

Completion Date: October, 2000

Hughes Aircraft Child Care Center

El Segundo, California

This project involved the design of significant renovations to a pre-existing freestanding bank building. Extensive sitework transformed the former bank's drive-up teller stations and vehicular circulation zones into playground and landscaped areas. The 6300 s.f. center serves 98 children.

Construction Cost: \$950,000.

Completion Date: 1/1/1999

"Planet AVANT!" Child Learning Center

Fremont, California

We designed this child care center as an integral part of a new corporate headquarters for a fast-growing information technology company. The playful design alludes to AVANT!'s "constellations" identity through arc-shaped walls and pendant lighting scheme. The facility features age-specific playgrounds directly outside the homerooms, to allow for the integration of indoor and outdoor spaces.

Construction Cost: \$550,000.

Completion Date: December, 1997

Du Pont Child Development Center

Wilmington, Delaware

This project involved the design of a new, ground-up 14,000 square foot child care center to serve the employees of Du Pont and the surrounding community. The design takes advantage of the appealing natural environment surrounding the wooded site and supports the most recent program approaches to early childhood development.

Construction Cost: \$1,800,000.

Completion Date: September, 1998

Cummings Center Child Care Center

Beverly, Massachusetts

Located in the redeveloped 1,000,000 square foot historic complex that formerly housed the United Shoe Machinery factory, this new 10,000 square foot child care center serves tenants and the surrounding community. The design features large exterior windows providing borrowed daylight to the inner rooms. Varying ceiling heights and unique room configurations provide an engaging and flexible environment with direct access to an adjacent playground.

Construction Cost: \$500,000.

Completion Date: October, 1997

Massachusetts General Hospital Back-up Child Care

Boston, Massachusetts

MGH has developed a novel hospital-based back-up and drop-in child care center serving doctors, staff and patients. The new 2,500 square foot building accommodates 26 children from 1 to 10 years of age in an environment designed to immediately engage children of a wide range of ages. The center occupies a central courtyard in the MGH complex, with an adjacent dedicated and protected outdoor playspace. The center features an indoor sandbox and climbing wall, along with an interpretive climbing loft/theatre that encourages children's imaginative play.

Construction Cost: \$950,000.

Completion Date: September, 1998

D. W. ARTHUR ASSOCIATES ARCHITECTURE

Representative Child Care and Early Education Project List

United Nations Child Care Center

New York, New York

This project involved the design of significant renovations and improvements to a pre-existing child care environment. The design updates the configuration to support the most recent program approaches to early childhood development. We provided initial design and layout consultation for the project.

Construction Cost: \$80,000. (est.)

Completion Date: 1998

Lincoln Nursery School

Lincoln, Massachusetts

This project incorporates significant improvements in this 50 year old cooperative nursery school housed in a 1950's addition to a 19th century Richardsonian parish house. The design thoroughly updates the environment to be supportive of contemporary approaches to early childhood development.

Construction Cost: \$150,000.

Completion Date: August, 2000

Allstate Children's Center

Chicago, Illinois

We provided conceptual and preliminary design for this ground-up facility serving employees of Allstate outside Chicago.

Construction Cost: \$5,000,000. (est.)

Completion Date: September, 1996

Gateway Back-up Child Care Center

Newark, New Jersey

This new back-up program serves the employees in and around the Gateway complex, including The Prudential. The layout was configured to optimize the flexibility of spaces in order to accommodate a variable age mix. Integral to the design concept are moveable activity surfaces which enclose or open up contiguous spaces depending on the need for varying age groupings or other mixes that can change from day to day.

Construction Cost: \$380,000.

Completion Date: July, 1997

"West Point Child Learning Center" - Merck & Co.

West Point, Pennsylvania

This new 20,000 square foot child learning center was designed to accommodate 240 children at Merck's West Point campus for a comprehensive range of programs including back-up and school-age care. The facility incorporates state-of-the-art conceptions about flexible arrangements of spaces for varying age groups, continuity of care, and balance between community areas and homerooms. The surrounding playgrounds were designed to incorporate a mature stand of trees which provide shade and a more natural setting for the entire facility.

Construction Cost: \$2,800,000.

Completion Date: August, 1997

Forum/IBM Child Care Center

North Raleigh, North Carolina

This ground-up facility serves the community of the Forum Office Park which has a large IBM presence. We provided schematic design and consultation services for the project. The 13,000 square foot center accommodates 194 children and features a large "commons" space surrounded by smaller clusters of homerooms.

Construction Cost: \$1,400,000.

Completion Date: 10/1/1997

New England Medical Center Child Care

Boston, Massachusetts

As a new child care center to serve the New England Medical Center community, this 3,500 square foot project was completed on a compressed construction schedule. The design takes maximum advantage of the window line in an existing medical center building on hold 1999

Construction Cost: \$250,000.

Completion Date: July, 1996

"Turner Second Generation - A Family Center"

Atlanta, Georgia

Serving the employees of Turner Broadcasting Systems, this new 10,500 square foot building is organized around a central courtyard. The classrooms open out onto a deep shaded porch which in turn surrounds the courtyard playgrounds. The building is situated so that one of four sides of the courtyard is open and provides sweeping views from the high vantage point of the central space out over the Turner Broadcasting System campus. The facility accommodates infants, toddlers, preschoolers and a range of afterschool, summer and other related programs.

Construction Cost: \$1,700,000.

Completion Date: October, 1996

D. W. ARTHUR ASSOCIATES ARCHITECTURE

Representative Child Care and Early Education Project List

Bartley Child Care Center

Amesbury, Massachusetts

This facility was planned to serve the Bartley Manufacturing Co. community. The new two-story building and playgrounds are designed to take advantage of a beautiful, sloping riverside site that is part of New England's industrial heritage. The 5000 square foot space will accommodate 36 infants, toddlers and preschoolers.

Construction Cost: \$600,000., est.

Completion Date: Project suspended

Imperial Child Development Center

Durham, North Carolina

Design and construction support services were provided for the development of this new free-standing child care center based on our prototypical design.

Construction Cost: \$550,000

Completion Date: April, 1996

Celebration Child Care

Celebration, Florida

The Disney Company planned to include child care as one of the amenities in the recently designed and constructed town of Celebration, Florida. We provided consultation related to planning and design of a child care center that would serve this new community.

Construction Cost: pending

Completion Date: suspended

New England Deaconess Hospital Children's Center

Brookline, Massachusetts

This center serves Boston's Deaconess Hospital community. Our design incorporates many of the planning strategies supporting developmental programs derived from the renowned Reggio-Emilia programs in Italy. The classrooms include lofts, platforms and art areas to encourage a sense of variety and intimacy for the children. Some of the classrooms take advantage of views over the Emerald Necklace, a mature urban riverbank landscape designed by F. L. Olmstead. This park also complements the playground in providing a variety of outside activities.

Construction Cost: \$230,000.

Completion Date: September, 1995

Embarcadero Center Back-up Child Care Center

San Francisco, California

One of the first back-up care facilities in San Francisco, this program would serve the greater Embarcadero and downtown San Francisco community. The design optimizes the flexibility of spaces to accommodate a variable age mix.

Construction Cost: \$500,000

Completion Date: Project suspended

Pasona Child Care International

Hikarigaoka Park Town, Japan

This new center serves residents in a newly developed mixed-use complex in greater Tokyo. Our third project for this Japanese provider incorporates the most current environmental innovations in early childhood development. A variety of activity spaces and zones are designed for flexibility to accommodate an evolving mix of age groups.

Construction Cost: \$400,000, est.

Completion Date: 3/1/1996

SAS Institute Child Care Center

Cary, North Carolina

This free-standing child care center has been developed to serve SAS Institute, a major software firm. Our design incorporates many recent conceptual developments for planning optimal early childhood development environments. The building is focused on a central courtyard that affords covered and uncovered outdoor space for families and children while it also provides a central organizing identity for the facility. We provided design services and assisted a local architect through construction.

Construction Cost: \$1,500,000.

Completion Date: March, 1996

Corporate Woods Child Care Center

Albany, New York

This child care center serves a number of major corporations in the surrounding office and mixed-use park. The new 7,400 square foot building accommodates 16 infants, 36 toddlers, and 56 preschoolers. The brick building, which recalls traditional schoolhouse design, features large windows to admit daylight deep into the homerooms.

Construction Cost: \$730,000.

Completion Date: March, 1995

D. W. ARTHUR ASSOCIATES ARCHITECTURE

Representative Child Care and Early Education Project List

Glaxo School Age Program - Modular program

Zebulon, North Carolina

The rapid growth in demand for child care and school age programs sponsored by Glaxo precipitated this investigation into the utilization of modular buildings for school age. Our design incorporates playful fenestration and entrances (ramps, steps, canopies) to transform the utilitarian structure into a unique and engaging destination for after-school and summer programs.

Construction Cost: \$80,000. (est.)

Completion Date: 12/10/1994

Computer Associates Child Care Center

Westwood, Massachusetts

This new child care facility will serve the greater Boston-area employees of Computer Associates, one of the largest software companies worldwide. The center is being constructed in an existing engineering and office facility and will have capacity for approximately 50 children. The design features a combination of flexible and fixed spaces to accommodate a varying composition of group sizes and ages.

Construction Cost: \$260,000. est.

Completion Date: project suspended

Cornell University/New York Presbyterian Hospital Child Care Center

New York, New York

Located on the second floor of Payson House, this child care center accommodates infants, toddlers and preschoolers associated with The New York Presbyterian Hospital and Cornell Medical School. The center features two outdoor rooftop playgrounds located on directly accessible terraces overlooking Manhattan's upper east side.

Construction Cost: \$430,000.

Completion Date: October, 1994

Child Care International - Kitasato Medical Center

Tokyo, Japan

This project involved our design of a prototype free-standing child care center for a growing Tokyo-based child care provider. The new building features light-filled and airy classrooms and a shared play tower with a double-helix stair of risers, cozy spaces and roof-top garden.

Construction Cost: \$400,000. (est.)

Completion Date: September, 1994

Community Children's Center: The Horizons Initiative

Dorchester, Massachusetts

This project involved the development of the first Community Children's Center in Boston specifically devoted to homeless children and their families. The center accommodates up to 75 children from ages 6 months to 6 years, and stands within a hospital complex with an outdoor courtyard to serve as the playground.

Construction Cost: \$350,000.

Completion Date: January, 1995

"Russell Call Child Care Center", Northeastern University

Boston, Massachusetts

This 5,200 square foot child care center is located in a residential building on the Northeastern University campus. The project scope included a new entrance and playground for the center, the relocation of dormitory common amenities, as well as complete interior reconstruction to accommodate the child care center. An immovable central concrete vault was perforated, resurfaced and transformed into a playhouse that is the central landmark in the center.

Construction Cost: \$330,000.

Completion Date: April, 1993

Mount Olive Children's Center at the International Trade Center

Mount Olive, New Jersey

This free-standing child care center was designed for a Rockefeller Group mixed-use enterprise zone development. The design for the new building incorporates clerestory windows to admit natural daylight to a central activity space and 'borrowed' light to homerooms. The 7,400 square foot building accommodates 16 infants, 40 toddlers, and 60 preschoolers.

Construction Cost: \$950,000.

Completion Date: September, 1993

D. W. ARTHUR ASSOCIATES ARCHITECTURE

Representative Child Care and Early Education Project List

Bright Horizons - St. Bartholomew's Church

New York, New York

Our involvement in this project included extensive design studies for a proposed child care center to serve families and employees located in midtown Manhattan. The center was proposed for an auditorium space within the community house attached to the landmark church on Park Avenue. Outdoor play area would be provided on an elevated terrace directly accessible to the center.

Construction Cost: \$200,000. est.

Completion Date: project suspended

Child Care International - Minami Azabu

Tokyo, Japan

This first project for Child Care International involved our design of a prototype daycare facility of 3,200 square feet for 38 infants, toddlers and preschoolers serving corporate employees and diplomatic families in Tokyo. The center incorporates innovative and playful spaces for children and their families, including a tatami room and built-in lofts and cozy spaces.

Construction Cost: \$300,000.

Completion Date: January, 1992

Old West Church Child Care Center

Boston, Massachusetts

Over several years, we were involved in the design of various renovations and improvement projects for this existing child care center. Located in a landmark historic Boston church, the program occupies approximately 3,000 square feet.

Construction Cost: \$30,000

Completion Date: Fall, 1994

Pfizer, Inc. Child Care Center

Groton, Connecticut

This child care center of 7,600 square feet for 108 infants, toddlers, and preschoolers with an adjacent outdoor playground area serves employees of Pfizer, Inc.'s central research facility. Design work involved the complete renovation of a convent with small rooms into an open and dynamic spatial environment for children.

Construction Cost: \$650,000.

Completion Date: August, 1992

Bright Horizons - The Prudential Center

Boston, Massachusetts

Construction of this 110 child capacity child care center at The Prudential Center included coordination with the Prudential Center Redevelopment master plan. Extensive conceptual studies culminated in a solution which entailed multi-phase construction and substantial reconfiguration to the existing building. The final configuration features an adjacent plaza level playground.

Construction Cost: \$850,000.

Completion Date: September, 1992

Bright Horizons Children's Center - Copper Ridge

Lyndhurst, New Jersey

Located on the ground level of a newly developed mixed-use complex, this child care center was designed to take extensive advantage of interior windows to create a light and airy environment. An entrance gallery leads to a central activity space which provides a sense of openness to the entire center.

Construction Cost: \$220,000.

Completion Date: August, 1991

The Corporate Center Children's Center

Framingham, Massachusetts

This child care facility, for 98 infants, toddlers, and preschoolers occupies 6,500 square feet in a new corporate office complex. The adjacent outdoor playground areas were designed to integrate with the landscape surrounding the new building. The child care center serves the Dun & Bradstreet Software corporate headquarters as well as affiliated companies.

Construction Cost: \$292,000.

Completion Date: August 1990

D. W. ARTHUR ASSOCIATES ARCHITECTURE, INC.

760 MAIN STREET, SUITE ONE, WALTHAM, MASSACHUSETTS 02451 • TEL: 617-426-2200 • www.dwarthur.com

DOGAN W. ARTHUR, AIA

Professional License Massachusetts, Vermont

Professional Affiliations NCARB Certified
AIA: American Institute of Architects
BSA: Boston Society of Architects
LEED Accredited Professional BD+C USGBC



Education

Harvard University Graduate School of Design Cambridge, MA
Master of Architecture, 1985, with Letter of Commendation

Dartmouth College Hanover, NH
A.B. in Engineering Sciences, 1978

Professional Practice

Founding Principal **D. W. Arthur Associates Architecture, Inc.** Boston, MA
Established architectural firm in 1988. Developed and expanded practice with a focus on high quality design and client satisfaction. The firm has completed a wide variety of award-winning educational, institutional, commercial and residential projects.

Professional Leadership

Speaker/Workshops **New Zealand Institute of Architects** Rotorua, Tauranga, and Hamilton, NZ
Lectured and led workshops in three NZ cities regarding our practice focus on early education design and general practice characteristics in the USA.

Presenter/Design Critic **Harvard University Graduate School of Design** Cambridge, MA
The Institute for Child Care Design. Presenter and design critic during week-long professional development course over 9 years.

Presenter/Design Critic **Children's Investment Fund** Boston, MA
Building Stronger Centers Training Institute. Presented and participated in design clinic with providers seeking assistance with improvement projects for physical environments supporting existing programs, since 2002.

Speaker **"Design for Children IN Nature"** Shepherdstown, W. VA
Design Institute, National Conservation Training Center, U.S. Dept of Fish and Wildlife
Presenter and panelist during professional development institute organized by the Natural Learning Initiative, with participants of diverse disciplines. Contributed design strategies and technical information.

Publications

Author **Design Guidelines** Massachusetts
Under auspices of Children's Investment Fund, DWAAA created a design guide for early education and school age facilities. Addresses fundamental principles of high quality environments and reflects evolving best practices and emerging quality standards promoted by the Massachusetts Department of Early Education and Care as well as other national advocacy organizations.

Author **Child Care Center Design** National
Local Initiatives Support Corporation sponsored a series of resource guides targeting the creation and improvement of child care facilities. We co-authored this 50-page guide and produced the illustrations for this and other guides in the series.

D. W. ARTHUR ASSOCIATES ARCHITECTURE, INC.

760 MAIN STREET • WALTHAM, MASSACHUSETTS 02451 • TEL: 617-426-2200 • WWW.DWARTHUR.COM

ADAM COLLIER



Education

Harvard Graduate School of Design Cambridge, MA
Master of Architecture 2000.

London College of Furniture London, UK
City & Guilds Cabinetmaking with distinction, 1988.

Goldsmith's College, University of London London, UK
BA (honors) Fine Art, 1984.

Professional

*Project Designer/
Manager*

D. W. Arthur Associates Architecture, Inc. since 2000

Adam has extensive experience with project management and construction administration. Responsibilities include designing and managing early education/child care, commercial, institutional and residential construction projects. Schematic design, design development, construction drawing production, interior and exterior detailing, models and presentation drawings prepared in various media employing Revit and 3-D modeling programs.

Project Management/design Projects:

Child Care/Early Education:

Concord Children's Center, Concord, MA
Otter Creek Children's Center, Middlebury, VT
Soldiers Field Park Children's Center
114 Western Ave. Child Care Center at Harvard SEAS
Partners Healthcare Assembly Row Child Care Center
David H. Koch Children's Center at MIT
Harvard University Children's Centers
UMass Medical Children's Center
SUNY Farmingdale Children's Center
SUNY Delhi Children's Center
Corning Children's Center
Beacon Hill Nursery School
Acelero Learning various children's centers
USES (United South End Settlements), with Utile

Commercial/Workplace:

Massachusetts Medical Society
Manulife Financial/John Hancock
Boston Private Bank & Trust Co., Inc.

Intern Project Architect **Haynes & Garthwaite Architects** Norwich, VT

Responsible for design, detailing, and construction drawings; set up office CAD system.

Intern Architect **Richard Meier & Partners** New York, NY

Design competition work including design development, model making, coordination with consultants.

Modelmaker **Adam's Models** London, UK

Constructed models for architects, industrial, product and furniture designers.

T. ANDREW HINTERMAN

AIA

Registered Architect, MA



Education

University at Buffalo, School of Architecture & Planning **Buffalo, NY**
Master of Architecture, 2003

University at Buffalo, School of Architecture & Planning **Buffalo, NY**
Bachelor of Professional Studies, 1999

Professional

Senior Architect

D. W. Arthur Associates Architecture, Inc. **Boston, MA**

Senior Architect experienced in all phases of design of small and mid-sized projects. Versatility in all activities of professional practice. Develops designs from concept to highly detailed construction packages; involvement with consultant collaboration and construction site activities. Project work focuses on all types of single family residential work, with additional involvement on child care and institutional projects. Andy possesses expert skills in productivity software. Trains staff in Autodesk Revit and assists in matters involving technology. DWAAA staff since 2020.
Project Management/design Projects:

Child Care/Early Education:

Concord Children's Center, Concord, MA

Otter Creek Children's Center, Middlebury, VT

Residential:

Berkshires estate, Stockbridge, MA

Multiple residences in suburban Boston area

Senior Associate

LDa Architecture & Interiors **Cambridge, MA**

Architect involved in all phases of design and construction. As Head of Revit Operations oversaw transition from AutoCAD to Revit; maintained office project templates, library; trained staff in Revit best practices. As Head of IT Department, ongoing troubleshooting; maintained software, hardware; trained employees on office standards; advised leadership on technological developments; managed IT budget. Fifteen year tenure.

Memberships

Boston Society of Architects Revit User Group Knowledge Community co - chair. Runs discussions, presentations and training for peer groups using Revit.

Cetified CalOES Second Responder

D. W. ARTHUR ASSOCIATES ARCHITECTURE, INC.

760 MAIN STREET • WALTHAM, MASSACHUSETTS 02451 • TEL: 617-426-2200 • WWW.DWARTHUR.COM

LORETTA OST ARTHUR

Registered Architect, MA



Education

Harvard University Graduate School of Design Cambridge, MA
Master of Architecture, 1985

Brandeis University Waltham, MA
B.A. *Magna cum laude, Honors in Fine Arts* 1981

Museum School Boston, MA
Oil painting studio, digital graphics course work.

Professional

Principal **D. W. Arthur Associates Architecture, Inc.** Boston, MA
Managing principal with design focus specializing in schematic design, design development, materials, finishes and furnishings selection. Involvement in early education, commercial, residential projects since 1990. High level management responsibilities include staffing, marketing, operational strategizing.

Job Captain **Steffian Bradley Architects** Boston, MA
Conceptual design, design development, construction documentation, presentation work, and project management for residential (multi-unit) and commercial (banks, office) building types.

Designer **Kohn, Pedersen, Fox Associates** New York, NY
Schematic design, design development, construction documents for office towers in New York City and London.

Designer **A.L. Aydelott & Associates** Framingham, MA
Commercial, residential, educational design work.

Community Service

Lincoln Nursery School Lincoln, MA
Board of Directors 2 years; pro bono architectural services.

First Parish in Lincoln Lincoln, MA
Facilities renovations committee involvement

Town Offices Building Committee Lincoln, MA
Facilities renovations committee involvement

Horizons Initiative Community Children's Centers Boston, MA
Ongoing volunteer improvement and maintenance projects over several years.